

# ALTERNATIVE LEARNING CENTER PROJECT SHEET



901 Neal St.  
Austin, Texas 78702

Building Area: 88,680 Square Feet  
Site: 20 Acres

Date of First Construction: 1953  
Planned Capacity: TBD

## About the Program

The Alternative Learning Center (ALC) is a school community built on second chances, small student-teacher ratios and a belief that all students deserve to achieve their greatest potential. The ALC provides academic instruction, reading intervention programs and character education to help students succeed at their home schools and communities.

For more detailed information about the district's long-term Facility Master Plan and recommendations for this facility, please visit [www.aisdfuture.com](http://www.aisdfuture.com).

## Proposed Projects

- The Reconstituted and Restructured ALC will be Relocated to Other District Facilities and will Continue to Serve Students in Grades 6-12
- Future New Locations to be Determined and Funded Outside of Bond
- Technology: Student Mobile Computers  
(To Move with Students to New Location)
- Technology: Teacher Computers  
(To Move with Teachers to New Location)

## Estimated Cost of Proposed Projects

**\$88,000**

Projects may include funding from additional sources.

# Campus & Program Moves

## Eastside Memorial ECHS, LASA, LBJ ECHS & Original L.C. Anderson Campus

### Eastside Memorial Early College High School/International HS



### Original L.C. Anderson Campus

- Austin ISD would build a new Eastside Memorial ECHS/IHS facility at the original L.C. Anderson site and restore the historic campus entry. The facility will have a capacity of 800 students. Projected cost: \$80 million
- As an Early College High School, Eastside Memorial offers students free, college-level courses and credit, and the opportunity to graduate with both an Austin ISD diploma and an associate degree from Austin Community College. Students can also benefit from partnership opportunities with ACC Eastview Campus and Huston-Tillotson University.
- LASA students and programs will move to the current Eastside Memorial campus.

### LBJ Early College High School

- Career Launch, a partnership with Seton Healthcare Family and Austin Community College, allows students to earn their high school diploma and an associate degree in health science, preparing them to further their education in the medical field. The six-year program launches in fall 2017, and gives students the opportunity to earn industry certifications and gain practical workplace experience and mentoring.
- LBJ ECHS will be redesigned as a medical high school, expanding on the Career Launch option for students interested in becoming professionals in the health care and medical fields. Projected cost: \$22 million.
- An on-site clinic will provide a resource for the surrounding community.

### Liberal Arts and Science Academy



### Eastside Memorial ECHS/International High School

- LASA would move to the existing Eastside Memorial facility and campus, with minor renovations being made to accommodate the LASA programs. Projected cost: \$4 million.
- LASA could accommodate 1,600 students—an increase of 400 students—with a possible future capacity of approximately 2,000 students.
- The district has been reassessing admissions processes and re-evaluating enrollment criteria for LASA in efforts increase diversity.

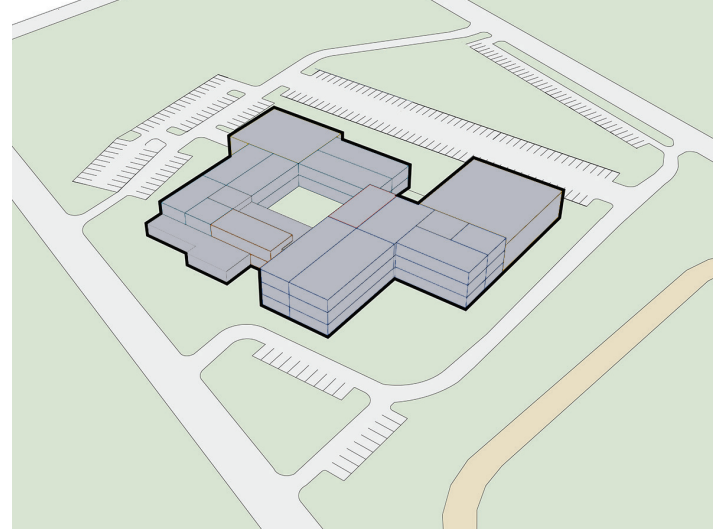
### Original L.C. Anderson Campus

- Eastside Memorial ECHS and International students will move to the original L.C. Anderson campus, which will include multipurpose rooms for community activities such as reunions and meetings.
- The campus will include a historic designation of the original site and a museum space/gallery area to celebrate and honor the legacy of the original L.C. Anderson site.
- The reconstituted and restructured Alternative Learning Center program, currently housed at the original L.C. Anderson campus, will be relocated and continue to serve students in grades 6–12.

# EASTSIDE MEMORIAL EARLY COLLEGE HIGH SCHOOL & INTERNATIONAL HIGH SCHOOL AT THE ORIGINAL L.C. ANDERSON CAMPUS FACILITY PROJECT SHEET



Current Eastside Memorial ECHS Campus



Concept Under Development at Original L.C. Anderson Campus

## Information for Future Location at the Original L.C. Anderson Campus

901 Neal St.  
Austin, TX 78702

Building Area: 88,680 Square Feet  
Site: 20 Acres

Date of First Construction: 1953  
Planned Capacity: 800

For more detailed information about the district's long-term Facility Master Plan and recommendations for this facility, please visit [www.aisdfuture.com](http://www.aisdfuture.com).

### Proposed Projects

- Build Modernized New High School for Eastside Memorial Early College High School and International High School at the Original L.C. Anderson Campus
- Construction of Multi-Purpose, Dual-Use Community Rooms and Gallery Area to Celebrate and Honor the Original L.C. Anderson Legacy
- Restoration of the 900 Thompson St. Address Location and Facade
- Technology: Computer Lab Improvements
- Technology: Student Mobile Computers
- Technology: Teacher Computers

### Original L.C. Anderson Campus Scores

Facility Condition Assessment (FCA)		
District Average - High School	Before Improvements	After Improvements
<b>67</b>	<b>27</b>	<b>90+</b>

● Fail < 30    
 ● Poor 30 - 49    
 ● Average 50 - 69    
 ● Good 70 - 89    
 ● Excellent 90 - 100

Educational Suitability Assessment (ESA)		
District Average - High School	Before Improvements	After Improvements
<b>56</b>	<b>42</b>	<b>90+</b>

● Fail 20 - 35    
 ● Poor 36 - 50    
 ● Average 51 - 65    
 ● Good 66 - 80    
 ● Excellent 81 - 100

### Estimated Cost of Proposed Projects

**\$80,699,000**

Projects may include funding from additional sources.

The FCA and ESA scores are a representation of the condition of the facility only, not of the school's academic performance.



# LASA HIGH SCHOOL AT THE EASTSIDE MEMORIAL ECHS CAMPUS FACILITY PROJECT SHEET



## Information for Future Location at Current Eastside Memorial ECHS Campus

1012 Arthur Stiles Rd.  
Austin, TX 78721

Building Area: 255,174 Square Feet  
Site: 28 Acres

Date of First Construction: 1960  
Planned Capacity: 1,548

For more detailed information about the district's long-term Facility Master Plan and recommendations for this facility, please visit [www.aisdfuture.com](http://www.aisdfuture.com).

### Proposed Projects

- Minor Renovations at Current Eastside Memorial Early College High School Campus to Receive LASA
- Campus Master Planning
- Districtwide Fire and Intrusion Alarm Upgrades
- Districtwide Security Camera Replacements
- Electrical System Improvements at Current Eastside Memorial ECHS Location
- Heating and Air Conditioning Improvements at Current Eastside Memorial ECHS Location
- Site Drainage Improvements at Current Eastside Memorial ECHS Location
- Technology: Computer Lab Improvements
- Technology: Network System Improvements
- Technology: Presentation Systems

### Eastside Memorial ECHS Campus Scores

#### Facility Condition Assessment (FCA)

District Average - High School	Before Improvements	After Improvements
<b>67</b>	<b>56</b>	<b>90+</b>
● Fail < 30	● Poor 30 - 49	● Average 50 - 69
	● Good 70 - 89	● Excellent 90 - 100

#### Educational Suitability Assessment (ESA)

District Average - High School	Before Improvements	After Improvements
<b>56</b>	<b>47</b>	<b>90+</b>
● Fail 20 - 35	● Poor 36 - 50	● Average 51 - 65
	● Good 66 - 80	● Excellent 81 - 100

#### Estimated Cost of Proposed Projects

**\$10,380,000**

Projects may include funding from additional sources.

The FCA and ESA scores are a representation of the condition of the facility only, not of the school's academic performance.



# LBJ EARLY COLLEGE HIGH SCHOOL FACILITY PROJECT SHEET



7309 Lazy Creek Dr.  
Austin, TX 78724

Building Area: 293,663 Square Feet  
Site: 41 Acres  
Date of First Construction: 1974

Existing Capacity: 902  
Planned Capacity: 1,842  
(capacity after LASA relocation)  
2016/2017 Utilization: 105%

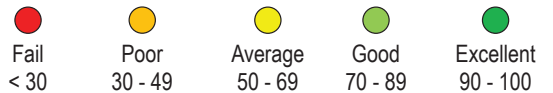
**For more detailed information about the district's long-term Facility Master Plan and recommendations for this facility, please visit [www.aisdfuture.com](http://www.aisdfuture.com).**

## Proposed Projects

- Academic Reinvention: Improvements for LBJ Medical High School Program (Phases 1 & 2)
- Below-Floor Crawl Space Ventilation and Drainage Improvements
- Campus Master Planning
- Districtwide Fire and Intrusion Alarm Upgrades
- Districtwide Security Camera Replacements
- Electrical System Improvements
- Elevator Replacement
- Exterior Doors Replacement
- Exterior Stairs Repairs
- Improvements to Seal Building Envelope
- Security System Replacement
- Technology: Computer Lab Improvements
- Technology: Network System Improvements
- Technology: Presentation Systems
- Technology: Student Mobile Computers
- Technology: Teacher Computers

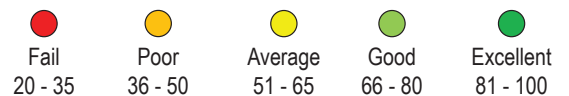
## Facility Condition Assessment (FCA)

This Facility	District Average - High School
<b>72</b>	<b>67</b>



## Educational Suitability Assessment (ESA)

This Facility	District Average - High School
<b>41</b>	<b>56</b>



## Estimated Cost of Proposed Projects

**\$25,575,000**

Projects may include funding from additional sources.

The FCA and ESA scores are a representation of the condition of the facility only, not of the school's academic performance.