

Educational Suitability Summary Report

Lively Middle School

Date: 01/21/2021

Score 55% Average

Lively Middle School serves an enrollment of approximately 1,180 students in south Austin and is on 10.3 acres of land. Known for offering advanced academic programming based around humanities, law and international studies, this school also has a magnet program in specialized language arts and social studies. Lively offers dual-language courses to its sixth-grade students.

This campus along South Congress Avenue was originally built in 1911 and has since gone through multiple renovations and additions in 1980 and 2002 for a total of 160,000 square feet. Access to the building is confusing with little signage directing visitors to the reception office. Parking is on the north side of the campus off East Mary Street and the visitor entrance is at the south of campus off Leland Street. [REDACTED]

The outdoor gardens in the northeast corner of campus are in good shape and create a true outdoor learning environment, although they are far from the learning spaces. The tree coverage in the center courtyard along with outdoor seating creates a pleasant place to sit and is adjacent to the cafeteria. The library has a unique design enclosing the historic façade of the 1911 building as part of an addition to the school and is a highlight for the campus.

Interview Overview

The assessment team was onsite for the interview and was joined by Principal Holiday, Assistant Principal Neeley, and Counselor Lamb. Their comments reflected the historic school's adaptation for 21st century learning and the advanced academic curriculum that Lively provides. Many of the items they feel should never change represent the history of the school. These include the old façade of the building (now in the library), artifacts on display throughout the school, a bell in the courtyard, and the murals around the campus.

There are various programs they feel are not in suitable spaces, such as Life Skills and the classes held in the portables, which includes AVID, science and SBS. It was mentioned that the CTE studios are dated and do not support the technology necessary for those programs. Lively feeds into Travis High School, yet they do not have the same CTE programs offered at Travis and is detrimental to students to not have a wider range of courses available. The theater was also discussed. It acts as a studio for the theater arts class but does not have the standard fixed seating typical in auditoriums. Its stage is a good size, but the seating area is very undersized for the student population.

Due to the history of the campus, the typical studios are dated overall and many of the spaces need renovation to function properly. The principal mentioned the need for flexible and collaborative spaces. There are not many multipurpose areas. Thinking about 20 years from now, the principal envisions a place for free thinking, problem solving and collaboration – a think tank. They see this

being indicative of Google and other tech offices where many students will end up working.

The school produces “Lively Live,” which is the school’s news station. This is an integral part of the school’s programming, and it is not located in a suitable space. The group requested an upgraded AV media space - an equipped broadcast studio including mics, green screens and audio equipment.

As mentioned above, there is a learning garden, but it is far from learning spaces. The hose spigot is also far from the gardens, which makes it difficult to water the garden. There is no Wi-Fi connection in the space. The principal would like to see a farm-to-table outdoor kitchen to better connect to learning objectives. Aside from this area, the campus does not have outdoor studios. Proper seating, shade coverage and technology in courtyards would make existing outdoor spaces much more useful and engaging for students.

Assessment Findings

The Educational Suitability Assessment of Lively Middle School earned a 55% overall score and places the campus in a category of Average. The assessment consists of seven General Building categories and eight Academic categories to determine areas that need more attention.

Unsatisfactory Categories (36-50%):

Security

Score is unsatisfactory.



Academics & Learning

Score is unsatisfactory.

Studios are slightly undersized and do not have standardized storage. There are no PLCs or true learning neighborhoods as described by the Ed Specs. There are no collaboration areas for teachers and students to use in varying group sizes. The building does not provide spaces for informal interaction or areas for students to work independently.

Visual and Performing Arts

Score is unsatisfactory.

Band is adequately sized. The orchestra hall is undersized. Both have limited practice rooms. Choir and dance spaces are undersized. Band, orchestra, choir and guitar all need additional storage. The theater does not have fixed auditorium seating and functions as the drama room.

Technology

Score is unsatisfactory.

Studios lack an appropriate number of outlets and charging locations. Additional outlets are needed and have appropriate capacity for higher voltage. A/V in the gym and cafeteria is dated and needs to be replaced. There are mobile screens available throughout the campus. Old wall mounted TVs

are still present in many studios. The school has requested their removal.

Average Categories (51-65%):**Exterior**

Score is average.

Vehicle circulation and community wayfinding is unclear and not well marked. A crosswalk at Leland Street and no parking signs were requested by the campus. Compost dumpster is near the cafeteria kitchen, but not on an accessible route. Trash and recycling dumpsters are on the other side of the school near the staff parking lot.

General Building

Score is average.

The general appearance of the school is good and murals around the campus convey pride in the community. Interior circulation routes are average at 7' – 8' wide. Only the cafeteria and gym can be used after-hours and the community room is not adequate. It does not have storage, family restrooms, or walls that go to ceiling.

Controllability of Systems

Score is average.

Studios do not have individual thermostat controls. Shades are provided but are in poor condition. Lighting controls differ across campus with tri-level and single switches throughout learning spaces.

Furniture, Fixtures, Equipment

Score is average.

The library is the only space with flexible and informal seating. Furniture is not new, but sturdy and clean, and cumbersome for students to move.

CTE and Career Connected Learning

Score is average.

There are a few CTE cluster pathways that are not offered at Lively – including education and training as well as hospitality and tourism. The school does not currently have space to offer hospitality and tourism courses.

Athletics and Wellness

Score is average.

The big and small gyms are properly sized and in good condition. Locker rooms are dated and need renovations to function better. The HVAC and plumbing are a big source of issues for these spaces. Campus does not have a dedicated wellness center. Facilities are set up to support UIL-sanctioned basketball and volleyball, but not track, football, tennis or soccer.

Food Services

Score is average.

Dining commons is undersized for current enrollment and permanent capacity but is connected to outdoor seating in the courtyard to accommodate overflow. The kitchen is undersized per Ed Specs, but has two nicely sized serving lines. While part of the facility condition assessment, the school reports plumbing issues in the cafeteria.

Educational Suitability Summary Report
Lively Middle School**Media Resources**

Score is average.

There are signs pointing to the library, but the library is interior to the building and does not support quiet study or small group work. There are edudisplays and a small projection screen available.

Administration Spaces

Score is average.

Admin space is not centralized

Reception office feels welcoming and provides good acoustic privacy.

Satisfactory Categories (66-80%):**Outdoor Learning and Activity**

Score is satisfactory.

There are opportunities provided throughout campus for outdoor learning, but they need renovations to function well. The learning gardens are set up nicely, but they are far from learning environments and a water connection. Outdoor electricity and an internet connection is also needed.

Environmental Quality

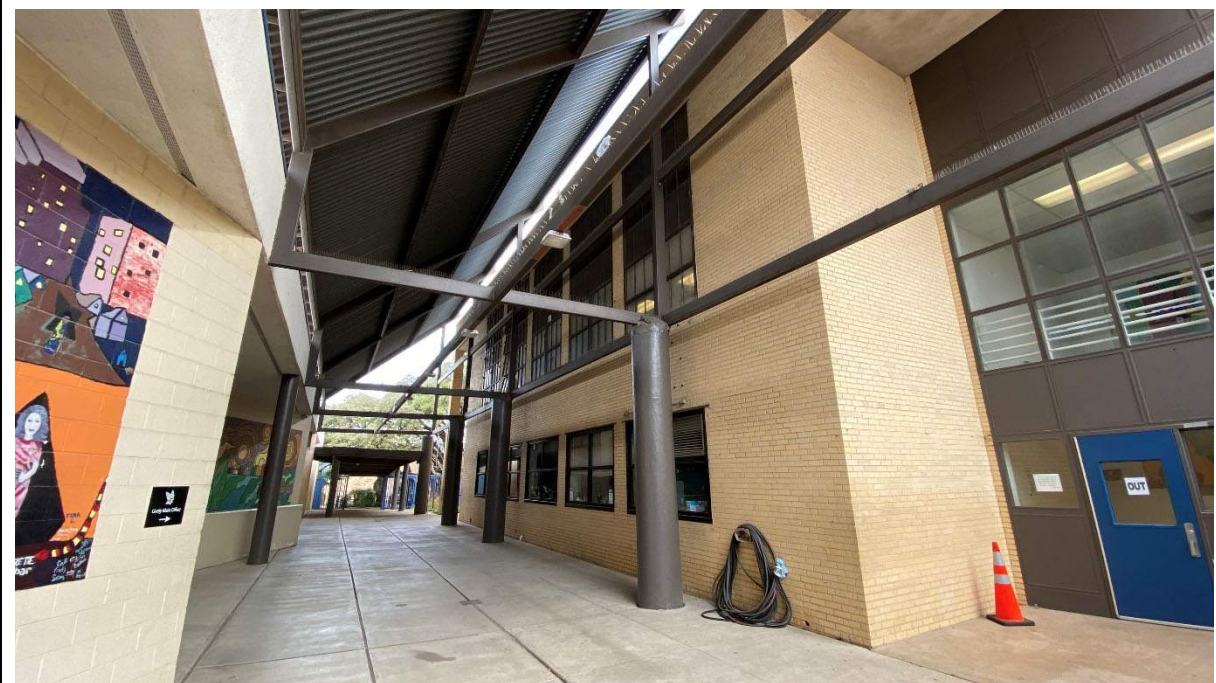
Score is satisfactory.

Acoustics and artificial lighting are adequate in the studio spaces. Most learning spaces have access to natural lighting and views to outside.

Supporting Photographs



Main Entrance: Lack of signage and wayfinding make it difficult to understand this is the main entrance. Additional signage has been posted since this photo was taken; however, additional signage is still needed.

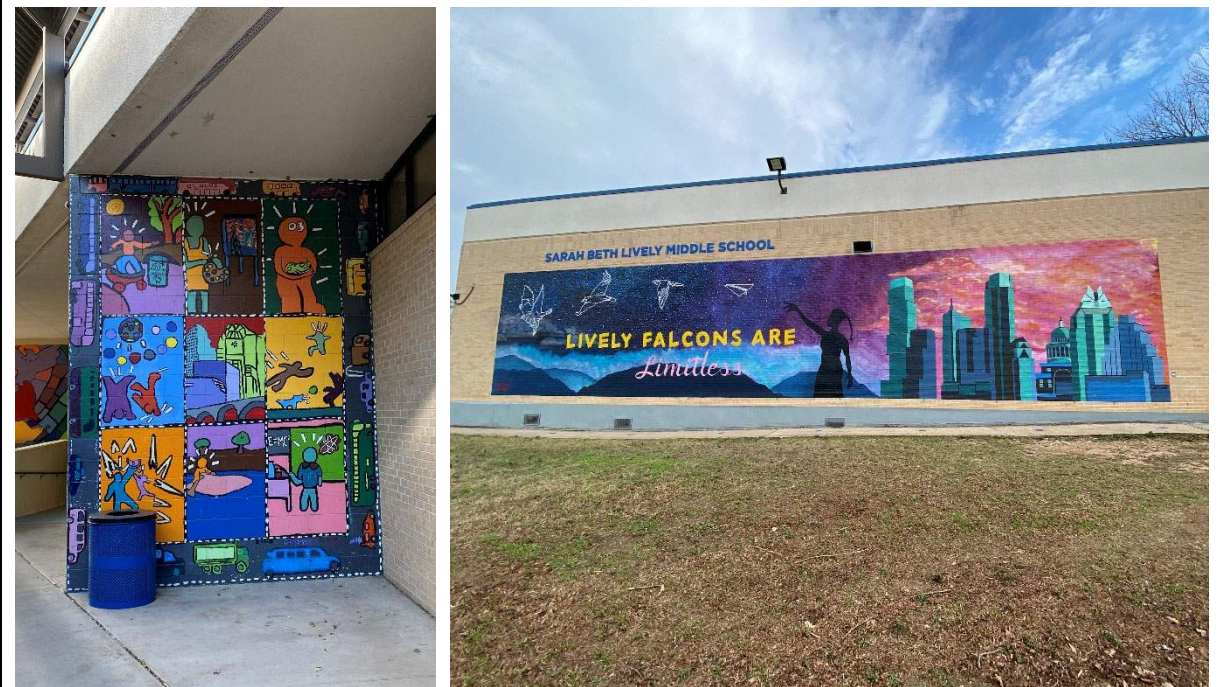


Main Entrance: View just inside the main entrance [REDACTED] The school reports bird nesting issues on the exposed structure.

Supporting Photographs

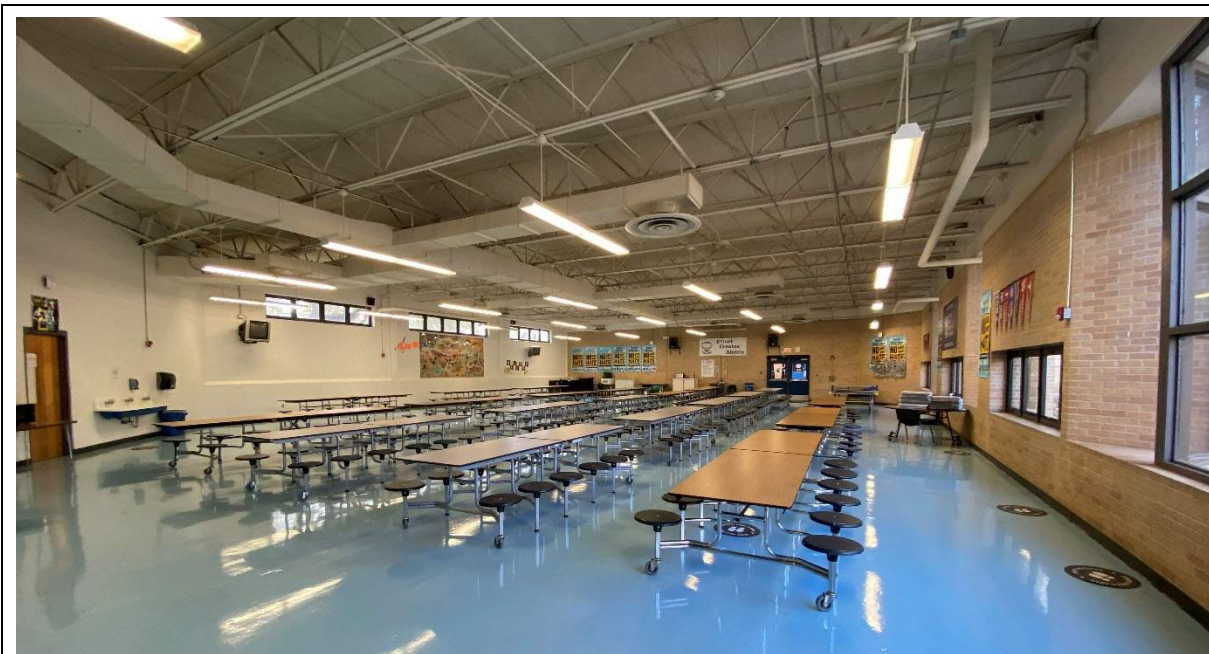


Outdoor Learning and Activity: A space set up with seating and a whiteboard for outdoor learning adjacent to the outdoor learning gardens.



Exterior Art: Murals throughout the campus convey community and school pride.

Supporting Photographs

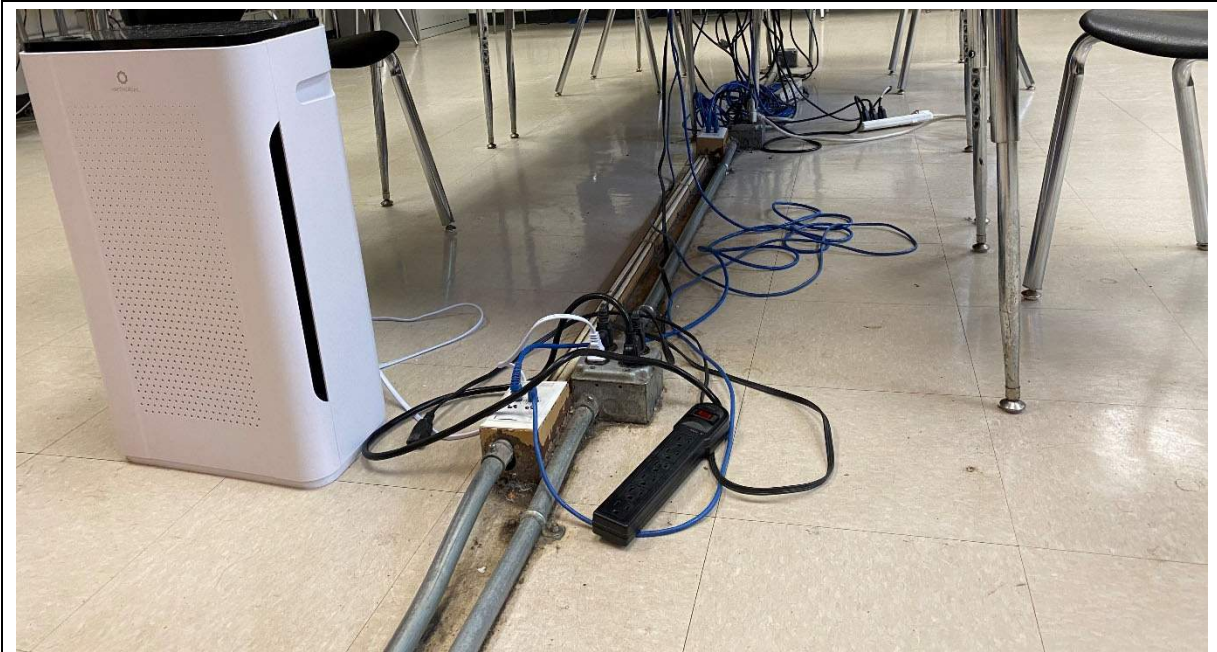


Dining Commons: Undersized, but good connection to natural daylight and seating in the internal courtyard (to the right in this photo).



Maker Space: Maker space is in area without full-height walls, near family support and Communities in Schools. Not currently in use due to COVID-19 protocols.

Supporting Photographs



CTE Studio: Old conduit runs along the floor creating a tripping hazard. This is an ongoing safety issue for the school.



Media Resources: The library contains the historic façade of the original building and is a feature the campus really likes.

Supporting Photographs



Internal Courtyard: Mature trees provide shade for outdoor seating. There is a covered walkway between buildings. During rain events, drainage issues and standing water (mosquito issues) occur.

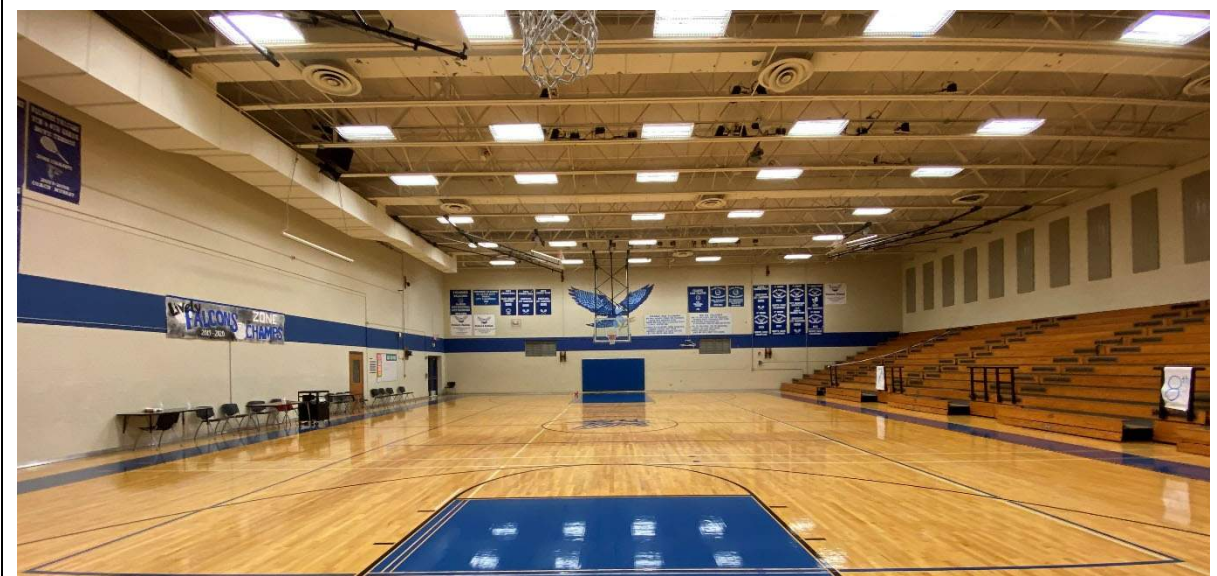


Technology: Antiquated technology is still present in many of the learning spaces.

Supporting Photographs



Visual and Performing Arts: Auditorium is in older part of building and works well as a drama room but does not accommodate enough people to function well as an auditorium. It does not have fixed auditorium seating and only has a flat floor for chairs.



Athletics and Wellness: Gym is adequately sized and in good condition.



Austin ISD Educational Suitability Assessment Criteria

General Building

School Name

Lively Middle School

Walk Attendees:

Lynn Petermann / Patrick Reinhard

Date:

1/21/2021

1 - Exterior		1	2	3	4	5	N/A	8.75	54%	
1.1	Does the site permit desirable separation of vehicular, bus and pedestrian traffic?			3				Comments	1.00	3.00
	1 Very unsatisfactory - Bus, car and pedestrian all happen at the same location							Circulation is separate but not well marked. Principal's note - We have signs that were purchased by the campus. Parking lot was just painted and arrows added since this report. A crosswalk on Leland and no parking signs on Leland would increase safety for students.		
	2 Unsatisfactory - Cars and buses mix, pedestrians are separated									
	3 Average - Buses, cars, and pedestrians are separate but stack space is small									
	4 Satisfactory - Buses, cars, and pedestrians are separate but drop off does not have a canopy or a holding place like a commons or cafeteria									
	5 Very satisfactory - Buses, cars, and pedestrians are separate and drop off area has a canopy and destination									
	N/A Does not apply									
1.2	Is the building easily identified with appropriate signage and community wayfinding?			3				Comments	0.25	0.75
	1 Very unsatisfactory - Campus has no signage / wayfinding							Circulation is unclear. Guest entry off of Leland and that is not apparent. No visitor parking.		
	2 Unsatisfactory - Signage/wayfinding is faded/hidden									
	3 Average - Signage / wayfinding visible but not apparent									
	4 Satisfactory - Signage / wayfinding is visible but not good condition									
	5 Very satisfactory - Signage and wayfinding is visible and easy to use									
	N/A Does not apply									

1 - Exterior (cont.)		1	2	3	4	5	N/A			
1.3	Is the dumpster accessible for trash / compost disposal?		2					Comments	0.50 1.00	
1	Very unsatisfactory - No compost present, route has obstacles (stairs, curbs, barriers) to dumpster							Compost by cafeteria. Has a step. Trash recycling on other side of school.		
2	Unsatisfactory - Compost is present. Route has obstacles to dumpster									
3	Average - Compost is present (<100' to cafeteria), Route to dumpster is free and clear but the two are not directly adjacent.									
4	Satisfactory - Compost and dumpster are directly adjacent and route is barrier free									
5	Very Satisfactory - Compost and dumpster are directly adjacent and route is barrier free. Dumpster are shaped / positioned so people of all heights can access it.									
N/A	Does not apply									
2 - Outdoor Learning and Activity		1	2	3	4	5	N/A		10.00 70%	
2.1	Are outdoor studios and support spaces appropriately configured per the ed spec?		2					Comments	1.00 2.00	
1	Very unsatisfactory - No dedicated outdoor studios							Opportunities provided throughout campus for outdoor learning. Needs updates to function well.		
2	Unsatisfactory - Too small, poor condition, disconnected from learning spaces, no flexibility, no shade provided									
3	Average - Adequate size, adequate condition, needs some renovations or updates to function well, 50% or less shade coverage over studio area									
4	Satisfactory - Good size, good condition, connected to learning spaces, good flexibility, more than 50% shade coverage over studio area									
5	Very satisfactory - Generous size, excellent condition, connected to learning spaces, excellent flexibility, full shade coverage over studio area									
N/A	Does not apply									
2.2	Are active playgrounds (elementary only) and support spaces configured per the ed spec?						N/A	Comments	0.00 0.00	
1	Very unsatisfactory - No dedicated active playground									
2	Unsatisfactory - Too small, poor condition, no shade provided									
3	Average - Adequate size, adequate condition, needs some renovations or updates to function well, 50% or less shade coverage over play structure									
4	Satisfactory - Good size, good condition, more than 50% shade coverage over play structure									
5	Very satisfactory - Generous size, excellent condition, full shade coverage over play structure									
N/A	Does not apply									

2 - Outdoor Learning and Activity (cont)		1	2	3	4	5	N/A				
2.3	Are gardens and support spaces appropriately configured per the ed spec? (evaluation on infrastructure not condition of plants)			3					Comments	0.00	0.00
1	Very unsatisfactory - No dedicated gardens							Monitoring answer, does not affect score for Outdoor Learning and Activity. Nice garden plot at corner of Mary and Brackenridge. Hose needs to be pulled from building.			
2	Unsatisfactory - Too small, poor condition, disconnected from learning spaces, no flexibility, no accessible water source										
3	Average - Adequate size, adequate condition, needs some renovations or updates to function well, water source is difficult to access										
4	Satisfactory - Good size, good condition, connected to learning spaces, good flexibility, water source is accessible with 100 ft hose										
5	Very Satisfactory - Generous size, excellent condition, connected to learning spaces, excellent flexibility, water source is less than 50ft from the garden or has irrigation										
N/A	Does not apply										
2.4	Are the rain gardens and/or cisterns appropriately configured per the ed spec?	1							Comments	0.00	0.00
1	Very unsatisfactory - No rain gardens or cisterns							Monitoring answer, does not affect score for Outdoor Learning and Activity.			
2	Unsatisfactory - Too small, poor condition, not functioning, disconnected										
3	Average - Adequate size, adequate condition, is connected, needs some renovations or updates to function well										
4	Satisfactory - Good size, good condition, functions properly										
5	Very Satisfactory - Generous size, excellent condition, exceptional functionality, connected to learning spaces, educational signage provided										
N/A	Does not apply										
2.5	Does the school have animal husbandry? (optional)	1							Comments	0.00	0.00
1	No										
5	Yes										
2.6	Does the school have nature loop trails? (optional)	1							Comments	0.00	0.00
1	No										
5	Yes										
2.7	Does the school have a learning pond? (optional)	1							Comments	0.00	0.00
1	No										
5	Yes										
2.8	Does the school have a grass play field and walking trail?				5				Comments	1.00	5.00
1	No										
5	Yes										

3 - General Building		1	2	3	4	5	N/A	11.25	53%	
3.1	Are interior circulation routes wide enough to safely and effectively accommodate student movement?			3				Comments	0.50	1.50
	1 Very unsatisfactory - Primary circulation is 5'-0" to 6'-0" wide									
	2 Unsatisfactory - Primary circulation is 6'-0" to 7'-0" wide									
	3 Average - Primary circulation is 7'-0" to 8'-0" wide									
	4 Satisfactory - Primary circulation is 8'-0"-10'-0" wide									
	5 Very satisfactory - Primary circulation is 10'-0"+ wide									
	N/A Does not apply									
3.2	Are community use areas arranged so that the school can allow night functions without full school access?			3				Comments	0.75	2.25
	1 Very unsatisfactory - Cafeteria, gym, and library cannot be accessed after hours								Cafeteria and gym can be used after-hours. Library is in middle of existing building and not accessible after-hours.	
	2 Unsatisfactory - Only one of the public spaces (Cafeteria, Gym and Library) can be accessed from parking and secured after hours									
	3 Average - Only two of the public spaces can be accessed from parking and secured after hours									
	4 Satisfactory - All of the public spaces can be accessed from parking and secured from the rest of the building but not individually									
	5 Very satisfactory - Cafeteria, gym, and library can be accessed from parking and locked off from rest of campus for night/evening use with their own entrance									
	N/A Does not apply									
3.3	Is there a community room that is a dedicated meeting space outside of school function?		2					Comments	0.75	1.50
	1 Very unsatisfactory - No dedicated community room								Present in older portion of building but not adequate and cannot be used after-hours.	
	2 Unsatisfactory - Community room but within school function, no access after school hours									
	3 Average - Community room, moderate size, but need some renovations or updates to function well									
	4 Satisfactory - Community room, good size /layout, meets needs /functions well									
	5 Very Satisfactory - Community room, generous size, nice condition, functions appropriately outside of school function									
	N/A Does not apply									
3.4	Does the general appearance of the school convey pride for the students and community?			3				Comments	0.25	0.75
	1 Very unsatisfactory - General appearance is poor									
	2 Unsatisfactory - General appearance is aged but ok									
	3 Average - General appearance is good									
	4 Satisfactory - General appearance shows pride in campus and student works									
	5 Very satisfactory - General appearance shows pride in campus and student works and is welcoming to the community									
	N/A Does not apply									

5 - Environmental Quality		1	2	3	4	5	N/A	25.00	68%	
5.1	How are acoustics in studios in general?			3				1.00	3.00	
1	Very unsatisfactory - Recognized word/sound from adjacent studio/corridor	Adequate acoustics.								
2	Unsatisfactory - Audible sound from adjacent studio/corridor									
3	Average - Slight sound from outside room									
4	Satisfactory - Walls to deck insulated only white noise from mechanical system									
5	Very satisfactory - Able to hear quiet speaking from across the room									
N/A	Does not apply									
5.2	Is the studio artificial lighting adequate quality?			3				1.00	3.00	
1	Very unsatisfactory - Sporadic lights work, glare, less than 20 FC									
2	Unsatisfactory - 10-19 FC or serious glare									
3	Average- 20-29 FC minor glare									
4	Satisfactory - 30-39 FC and no glare									
5	Very satisfactory - 40+ FC and no glare									
N/A	Does not apply									
5.3	Is there access to natural light in studios?					5		1.00	5.00	
1	Very unsatisfactory - No learning spaces have natural light									
2	Unsatisfactory - 1-25% of learning spaces have natural light or windows are too small to let in light									
3	Average - 26-50% of learning spaces have natural light									
4	Satisfactory - 51-75% of learning spaces have natural light									
5	Very satisfactory - 76-100% of learning spaces have natural light									
N/A	Does not apply									
5.4	Is there access to outside views from learning spaces?				4			1.00	4.00	
1	Very unsatisfactory - No learning spaces have views	Some classrooms overlook library and have access to overhead natural daylight. 500 wing rooms have high windows but no views outside.								
2	Unsatisfactory - 1-25% of learning spaces have views or windows are too small to see out									
3	Average - 26-50% of learning spaces have views									
4	Satisfactory - 51-75% of learning spaces have views									
5	Very satisfactory - 76-100% of learning spaces have views									
N/A	Does not apply									

5 - Environmental Quality (cont.)		1	2	3	4	5	N/A			
5.5	Does the building have odor or pest problems?		2					Comments	1.00 2.00	
1	Very unsatisfactory - Evidence of both pests and odors							Smell in old building.		
2	Unsatisfactory - Evidence of pests or odors									
3	Average - Limited evidence of pests, no odors									
4	Satisfactory - No evidence of pests / odors, school cleanliness in good condition									
5	Very Satisfactory - No evidence, school cleanliness in excellent condition									
N/A	Does not apply									
6 - Controllability of Systems		1	2	3	4	5	N/A	12.50	52%	
6.1	Does the studio thermostat allow for individual control?	1						Comments	0.50 0.50	
1	No									
5	Yes									
6.2	Are shades provided to control natural light in learning spaces?			3				Comments	1.00 3.00	
1	Very unsatisfactory - No, windows are covered with boards/paper							Poor condition but functional		
2	Unsatisfactory - No, windows have no light control									
3	Average - Yes, but poor condition blinds									
4	Satisfactory - Yes, blinds									
5	Very satisfactory - Blackout shades									
N/A	Does not apply									
6.3	What is the quality of lighting controls in the studios?			3				Comments	1.00 3.00	
1	Very unsatisfactory - Single switch only per room							A combination - Tri level switch available in some studios and single switching available in some.		
2	Unsatisfactory - Alternating rows switch off									
3	Average - Alternating lamps in single fixtures switch off									
4	Satisfactory - Tri level switching									
5	Very satisfactory - Dimmable									
N/A	Does not apply									

7 - Furniture, Fixtures & Equipment		1	2	3	4	5	N/A	18.75	64%	
7.1	What is the current condition of the furniture?				4			Comments	0.75	3.00
1	Very unsatisfactory - Damaged or broken, non-functioning									
2	Unsatisfactory - Torn/ bent/ wrong size									
3	Average - Scratched/dented/marked									
4	Satisfactory - Not new, but sturdy and clean									
5	Very satisfactory - New									
N/A	Does not apply									
7.2	Are a variety of furniture types being accommodated throughout the school - learning commons, dining commons, other multi-use spaces?		2					Comments	1.00	2.00
1	Very Unsatisfactory - Same furniture used in all spaces	Library has some flexible furniture.								
2	Unsatisfactory - Furniture variety in one multi-use space									
3	Average - Furniture variety in more than one multi-use space									
4	Satisfactory - All multi-use spaces have greater than one type of furniture									
5	Very satisfactory - All multi-use spaces have greater than two types of furniture									
N/A	Does not apply									
7.3	How well does furniture accommodate rapid reconfiguration of a space?			3				Comments	1.00	3.00
1	Very Unsatisfactory - Furniture is fixed or very heavy									
2	Unsatisfactory - Furniture does not allow desks to be configured as individuals, small groups, or large groups									
3	Average - Mix of furniture that can reconfigure but is cumbersome to move									
4	Satisfactory - Furniture is flexible for multiple configurations of space									
5	Very satisfactory - Furniture is flexible for multiple configurations of space, easy to move and stack									
N/A	Does not apply									
7.4	Is the furniture ergonomic and size appropriate for grade level?				4			Comments	1.00	4.00
1	Very unsatisfactory - Desk with attached chair combinations too small for grade level									
2	Unsatisfactory - Desk with attached chair combinations									
3	Average - Mix of studios with tables/loose chairs and desks with fixed seats									
4	Very satisfactory - Tables with loose chairs									
5	Very satisfactory - Tables with loose chairs that allow students to be active									
N/A	Does not apply									

Zero Waste		1	2	3	4	5	N/A	5.00	70%
Do studios and corridors have blue recycle bins with bilingual instructions and/or image sorting instructions?				3				Comments	0.50 1.50
1	Very unsatisfactory - There are no recycling and landfill bins and signage are sparse or infrequent, OR there are only landfill bins with no recycling bins.							A score for this category is being recorded, but this category is not calculated in the overall ESA average. Not in corridors. In some studios.	
2	Unsatisfactory - Bins and signage are sparse or infrequent and/or lack clear signage.								
3	Average - 50% of corridors and studios have both a landfill bin and a recycle bin in an accessible location. The containers have clear signage.								
4	Satisfactory - 75% of studios and corridors have a visible landfill and recycle collection containers in an accessible location. The containers have clear signage.								
5	Very satisfactory - All studios / corridors (100%) have visible landfill and recycle collection containers in accessible locations. The containers have clear signage, and the style and format is consistent and uniform across campus.								
N/A	Does not apply								
Does the cafeteria (or wherever meals are served) have at least one of each: green compost bin, blue recycle bin, and landfill bin? Are the bins labelled clearly with bilingual and/or image sorting?					4			Comments	0.50 2.00
1	Very unsatisfactory- There may be landfill bins, but there are no compost and/or recycle bins. There is not clear sorting signage.							A score for this category is being recorded, but this category is not calculated in the overall ESA average. Difficult to score during nontypical year.	
2	Unsatisfactory- Recycle, landfill, and compost bins are present, but the bins are scattered and no co-located next to one another. Signage is absent or inconsistent.								
3	Average- There is at least one waste station with all three bins (recycle, compost, landfill) located with close proximity to one another. The signage is visible and consistent.								
4	Satisfactory- There are several waste stations as described above								
5	Very Satisfactory - There are several waste stations as described above, and additional signage in the cafeteria that encourages recycling/composting.								
N/A	Does not apply								



Perkins&Will

Austin ISD Educational Suitability Assessment Criteria

Academics - Middle School / High School

School Name

Lively Middle School

Walk Attendees:

Lynn Petermann / Patrick Reinhard

Date:

1/21/2021

8 - Academics & Learning		1	2	3	4	5	N/A	65.00	42%	
8.1	Are studios appropriately configured per the ed spec?		2					Comments	1.00 2.00	
1	Very unsatisfactory - Too small, no flexibility, disconnected	<p>Studios are slightly undersized (750 - 790 SF) in both 500 wing and in original school building.</p>								
2	Unsatisfactory - Too small, only one area for all teaching methods, limited flexibility, disconnected									
3	Neutral - Adequate size, multiple areas for different teaching methods, adequate flexibility, limited transparency and connection to other studios and shared learning spaces, needs updates or renovations to function well.									
4	Satisfactory - Good size, multiple areas for different teaching methods, good flexibility, good transparency and connection to other studios and shared learning spaces									
5	Very Satisfactory - Generous size, multiple areas for different teaching methods, excellent flexibility, generous display area and visual teaching tools, excellent transparency and connection with other studios and shared learning spaces									
N/A	Does not apply									
8.2	Do studios have appropriate support spaces such as storage per the ed spec?		2					Comments	1.00 2.00	
1	Very unsatisfactory - None provided	<p>Storage only available in studios as casework. Not standardized throughout school.</p>								
2	Unsatisfactory - Too small, disconnected, poor condition									
3	Neutral - Adequate size, average condition, needs updates or renovations to function well									
4	Satisfactory - Good size, connected, good condition									
5	Very Satisfactory - Generous size, connected, excellent condition									
N/A	Does not apply									

8 - Academics & Learning (cont.)		1	2	3	4	5	N/A		
8.3	Do typical learning neighborhoods have small and medium (high school only) group rooms and open collaboration space?	1						Comments	1.00 1.00
	1 Very unsatisfactory - No breakout rooms or open collaboration spaces are provided 2 Unsatisfactory - Too small or too few, poor condition, no flexibility, lacks visual connection to learning neighborhood, poor acoustic privacy 3 Average - Adequate size, adequate condition, needs some renovations or updates to function well 4 Satisfactory - Good size, good condition and flexibility, transparency and connection to learning neighborhood, acoustic privacy 5 Very Satisfactory - Generous size, excellent condition and flexibility, transparency and connection to learning neighborhood, acoustic privacy N/A Does not apply								
8.4	Are Science Labs and support spaces appropriately configured per the ed spec?		2					Comments	1.00 2.00
	1 Very unsatisfactory - No dedicated science room 2 Unsatisfactory - Too small, poor condition, no connected support space 3 Average - Adequate size, adequate condition, needs some renovations or updates to function well 4 Satisfactory - Good size, good condition, connected support spaces 5 Very Satisfactory - Generous size, excellent condition, connected support spaces N/A Does not apply	Science is in okay shape. In 500 wing on ground floor. Missing prep rooms.							
8.5	Are Maker Spaces and support spaces appropriately configured per the ed spec? (cross reference with CTE below)		2					Comments	1.00 2.00
	1 Very unsatisfactory - No dedicated maker spaces 2 Unsatisfactory - Too small, poor condition, disconnected from learning spaces, no flexibility 3 Average - Adequate size, adequate condition, needs some renovations or updates to function well 4 Satisfactory - Good size, good condition, connected to learning spaces 5 Very Satisfactory - Generous size, excellent condition, connected to learning spaces N/A Does not apply	Ad hoc space in shop rooms. No full-height walls.							

8 - Academics & Learning (cont.)		1	2	3	4	5	N/A			
8.6	Is there a Professional Learning Center in the learning neighborhood?	1						Comments	1.00 1.00	
1	Very unsatisfactory - No dedicated space for Professional Learning Center									
2	Unsatisfactory - Too small, poor condition, disconnected									
3	Average - Adequate size, adequate condition, needs some renovations or updates to function well									
4	Satisfactory - Good size, good condition, connected									
5	Very Satisfactory - Generous size, excellent condition, connected									
8.7	Are there adequate places to display the evidence and artifacts of learning (both 2D and 3D)?			3				Comments	1.00 3.00	
1	Very unsatisfactory - No dedicated space									
2	Unsatisfactory - Too small, non-dedicated, poor condition									
3	Average - Adequate size, adequate condition, needs updates or renovations to function well									
4	Satisfactory - Good size, good condition									
5	Very Satisfactory - Generous size, excellent condition									
N/A	Does not apply									
8.8	Does the building / learning neighborhood provide adequate opportunities for students/teachers to collaborate in varying group sizes?	1						Comments	1.00 1.00	
1	Very unsatisfactory - No space to support collaboration in various sizes.									
2	Unsatisfactory - Too small, inflexible, only one option, does not support a variety of group sizes									
3	Average - Adequate space for collaboration, needs updates or renovations to function well.									
4	Satisfactory - Good size, good condition, multiple options to support a variety of group sizes									
5	Very Satisfactory - Generous size, excellent condition, multiple options to support a variety of group sizes									
N/A	Does not apply									
8.9	Does the building provide opportunities for informal interaction?		2					Comments	1.00 2.00	
1	Very unsatisfactory - No space								Courtyard spaces provide some opportunity for informal interaction.	
2	Unsatisfactory - Too small, poor condition, layout and furnishings do not support informal interaction well									
3	Average - Adequate size and condition, needs updates or renovations to function well.									
4	Satisfactory - Good size, good condition, layout and furnishings support informal interactions									
5	Very Satisfactory - Generous size, excellent condition, layout and furnishings support informal interactions									
N/A	Does not apply									

8 - Academics & Learning (cont.)		1	2	3	4	5	N/A			
8.10	Does the building provide adequate opportunities for students to work independently?	1						Comments	1.00 1.00	
1	Very unsatisfactory - No breakout rooms/small study spaces									
2	Unsatisfactory - Too small, poor condition, no acoustic privacy, only one space for independent work, disconnected from learning neighborhood									
3	Average - Adequate size and condition, needs updates or renovations to function well.									
4	Satisfactory - Good size and condition, acoustic privacy, variety of independent work space options, connected to learning neighborhood									
5	Very Satisfactory - Generous size, excellent condition, acoustic privacy, variety of independent work space options, connected to learning neighborhood									
N/A	Does not apply									
Special Education										
8.11	Are Special Education spaces appropriately configured per the ed spec?		2					Comments	1.00 2.00	
1	Very unsatisfactory - Too small, no flexibility, disconnected								SBS is in a portable. One life skills classroom is adequate per Ed Spec. Other in Room 110 is not and is in a regular classroom.	
2	Unsatisfactory - Too small, only one area for all teaching methods, limited flexibility, disconnected									
3	Neutral - Adequate size, multiple areas for different teaching methods, adequate flexibility, limited transparency and connection to other studios and shared learning spaces, needs updates or renovations to function well.									
4	Satisfactory - Good size, multiple areas for different teaching methods, good flexibility, good transparency and connection to other studios and shared learning spaces									
5	Very Satisfactory - Generous size, multiple areas for different teaching methods, excellent flexibility, generous display area and visual teaching tools, excellent transparency and connection with other studios and shared learning spaces									
N/A	Does not apply									
8.12	Are Special Education support spaces, such as storage, space for washer/dryer, appropriately configured per the ed spec?			3				Comments	1.00 3.00	
1	Very unsatisfactory - None provided								One life skills class has fully accessible toilet and shower. Other one is not set up as a life skills classroom but being used that way.	
2	Unsatisfactory - Too small, disconnected, poor condition									
3	Neutral - Adequate size, average condition, needs updates or renovations to function well									
4	Satisfactory - Good size, connected, good condition									
5	Very Satisfactory - Generous size, connected, excellent condition									
N/A	Does not apply									

8 - Academics & Learning (cont.)		1	2	3	4	5	N/A			
8.13	Are Accessible restrooms and changing rooms readily available to the Special Education spaces?					5		Comments	1.00	5.00
1	No									
5	Yes	Yes, it is provided but needs updating.								
STEAM Center										
8.14	Does the campus have space to support a "STEAM" center?				4			Comments	0.00	0.00
1	Very unsatisfactory - No available space for STEAM center and inadequate studio / collaborative space	Monitoring answer, but does not count toward overall score. STEM room used to be old wood shop. Has some old cabinetry and power issues. Outdoor connection to ad hoc maker space.								
2	Unsatisfactory - Collaborative areas / studios for CTE/CCL are completely separate but adequate size									
3	Neutral - Collaborative areas / studios for CTE/CCL are adjacent but function separately									
4	Satisfactory - Collaborative areas / studios for CTE/CCL function and have space availability to create STEAM center									
5	Very Satisfactory - Functioning STEAM center offers studios, labs, common collaborative areas to support multimedia distance and hands-on project based learning									
N/A	Does not apply									
9 - CTE and Career Connected Learning									17.50	60%
9.1	How close is your campus to a CTE cluster pathway that is aligned with your CTE programs (Middle School only)?				4			Comments	1.00	4.00
1	Very unsatisfactory - No correlation to CTE cluster pathway, no CTE programs.	A few pathways are not offered at Lively that are available at high school level. See notes below. Spaces for CTE are dated and need upgrading.								
2	Unsatisfactory - School supports less than half of the CTE programs that are listed in the cluster pathway.									
3	Average - School support half of CTE programs listed in the cluster pathway, but missing some.									
4	Satisfactory - School support a majority of CTE programs listed in the CTE cluster pathway.									
5	Very Satisfactory - School is aligned with CTE cluster pathway.									
N/A	Does not apply									
9.2	Do campus facilities align with the CTE Ed Spec Requirements for the current pathways offered?: Architecture and Construction	1							0.25	0.25
1	No	Cluster focus at Crockett								
5	Yes									
N/A	Does not apply									
9.3	Arts, Audio and Video Technology and Communications					5		Cluster focus at all HS	0.25	1.25
9.4	Business, Management and Administration					5		Cluster focus at all HS	0.25	1.25
9.5	Education and Training	1						Cluster focus at Travis	0.25	0.25
9.6	Health Science	1						Cluster at Eastside	0.25	0.25

9 - CTE and Career Connected Learning (cont.)		1	2	3	4	5	N/A			
9.7	Hospitality and Tourism	1						Cluster focus at Travis	0.25 0.25	
9.8	Human Services (high school only)						N/A		0.00 0.00	
9.9	Information Technology					5		Cluster focus at Travis	0.25 1.25	
9.10	Agriculture, Food and Natural Resources	1						No, not available at feeder HS. Only available at Clifton	0.25 0.25	
9.11	Science, Technology, Engineering, and Mathematics					5		Cluster focus at all HS	0.25 1.25	
9.12	Transportation, Distribution and Logistics	1						Cluster focus at Crockett	0.25 0.25	
9.13	Finance (high school only)						N/A		0.00 0.00	
9.14	Government and Public Administration / JROTC Military programs (high school only)						N/A		0.00 0.00	
9.15	Law, Public Safety, Corrections and Security (high school only)						N/A		0.00 0.00	
9.16	Manufacturing (high school only)						N/A		0.00 0.00	
9.17	Marketing, Sales and Services (high school only)						N/A		0.00 0.00	
10 - Visual and Performing Arts									35.00 43%	
10.1	Is there flexibility of space to also be used by CTE and Athletics?					5		Comments	0.00 0.00	
	1 No 5 Yes	Monitoring answer, but doesn't affect overall score.								
10.2	Are band and support spaces (rehearsal and storage) appropriately configured per the ed spec?			3				Comments	1.00 3.00	
	1 Very unsatisfactory - Too small, missing program spaces 2 Unsatisfactory - Too small, poor condition 3 Neutral - Adequate size, adequate condition, needs updates or renovations to function well. 4 Satisfactory - Good size, good condition 5 Very Satisfactory - Generous size, excellent condition N/A Does not apply	Band hall is adequately sized. Only 2 practice rooms. One is currently being used as storage.								
10.3	Are orchestra and support spaces appropriately configured per the ed spec?		2					Comments	1.00 2.00	
	1 Very unsatisfactory - Too small, missing program spaces 2 Unsatisfactory - Too small, poor condition 3 Neutral - Adequate size, adequate condition, needs updates or renovations to function well. 4 Satisfactory - Good size, good condition 5 Very Satisfactory - Generous size, excellent condition N/A Does not apply	Orchestra is undersized at 1000 SF. One practice room being used as storage. All components -- band, choir, orchestra -- don't have adequate storage.								

10 - Visual and Performing Arts (cont.)		1	2	3	4	5	N/A			
10.4	Are choir and support spaces appropriately configured per the ed spec?		2					Comments	1.00 2.00	
	1 Very unsatisfactory - Too small, missing program spaces 2 Unsatisfactory - Too small, poor condition 3 Neutral - Adequate size, adequate condition, needs updates or renovations to function well. 4 Satisfactory - Good size, good condition 5 Very Satisfactory - Generous size, excellent condition N/A Does not apply								Choir room is undersized at 950 SF.	
10.5	Are dance and support spaces appropriately configured per the ed spec?		2					Comments	1.00 2.00	
	1 Very unsatisfactory - Too small, missing program spaces 2 Unsatisfactory - Too small, poor condition 3 Neutral - Adequate size, adequate condition, needs updates or renovations to function well. 4 Satisfactory - Good size, good condition 5 Very Satisfactory - Generous size, excellent condition N/A Does not apply								Undersized at 850 SF. Nice condition. Sprung floor with mirror and barre. No storage.	
10.6	Are theater and support spaces appropriately configured per the ed spec?			3				Comments	1.00 3.00	
	1 Very unsatisfactory - Too small, missing program spaces 2 Unsatisfactory - Too small, poor condition 3 Neutral - Adequate size, adequate condition, needs updates or renovations to function well. 4 Satisfactory - Good size, good condition 5 Very Satisfactory - Generous size, excellent condition N/A Does not apply								Theater room in main building is large and acts as auditorium. No fixed seating. They have to bring in chairs for performances. Also functions as drama classroom. A/V looks dated but rigging for stage lights is new.	
10.7	Are visual arts and support spaces appropriately configured per the ed spec?		2					Comments	1.00 2.00	
	1 Very unsatisfactory - Too small, missing program spaces 2 Unsatisfactory - Too small, poor condition 3 Neutral - Adequate size, adequate condition, needs updates or renovations to function well. 4 Satisfactory - Good size, good condition 5 Very Satisfactory - Generous size, excellent condition N/A Does not apply								Art room 1 is being used as law classroom. Art room 2 is adequate size. Kiln off of room 2.	
10.8	Does the campus have adequate space for the specialty arts programs (Ensemble, Guitar, Music studies, Music theory and Piano)?	1						Comments	1.00 1.00	
	1 No 5 Yes								Guitar is in aux band room	

11 - Athletics and Wellness						18.75	52%
11.1	Does the campus meet ed spec standard for physical education program spaces?			3		Comments	1.00 3.00
1	Very unsatisfactory - Too small, missing program spaces	Big and small gym are adequately sized. Weight room is undersized at 750 SF. Girls'/boys' locker are small and finishes are dated and need updated to function better. AC does not work well in locker room and weight room.					
2	Unsatisfactory - Too small, poor condition						
3	Average - Adequate size, adequate condition, needs some renovations or updates to function well						
4	Satisfactory - Good size, good condition						
5	Very Satisfactory - Generous size, excellent condition						
N/A	Does not apply						
11.2	Does the campus have a dedicated wellness center?	1				Comments	0.50 0.50
1	No						
5	Yes						
11.3	Does the community have access to exterior playfields/courts?			5		Comments	0.50 2.50
1	No	Track to be redone with 2017 bond. Basketball goals and blacktop are scheduled to be replace Summer 2021.					
5	Yes						
11.4	Are facilities available to facilitate eSports (High School only)?				N/A	Comments	0.00 0.00
1	No	Monitoring answer, but doesn't affect overall score.					
5	Yes						
11.5	Are facilities set up to support UIL sanctioned athletics for basketball?			5		Comments	0.25 1.25
1	No						
5	Yes						
11.6	Are facilities set up to support UIL sanctioned athletics for track?	1				Comments	0.25 0.25
1	No	Track is not full sized.					
5	Yes						
11.7	Are facilities set up to support UIL sanctioned athletics for football?	1				Comments	0.25 0.25
1	No	Full size field not provided / no seating. The irrigation system leads water and floods the field frequently.					
5	Yes						
11.8	Are facilities set up to support UIL sanctioned athletics for volleyball?			5		Comments	0.25 1.25
1	No						
5	Yes						
11.9	Are facilities set up to support UIL sanctioned athletics for tennis?	1				Comments	0.25 0.25
1	No	only 2 courts provided					
5	Yes						
11.10	Are facilities set up to support UIL sanctioned athletics for soccer?	1				Comments	0.25 0.25
1	No	Full size field not provided / no seating					
5	Yes						

11 - Athletics and Wellness (cont.)		1	2	3	4	5	N/A		
11.11	Are facilities (dedicated storage) set up to support UIL sanctioned athletics for cross-country (high school only)?						N/A	Comments	0.00 0.00
	1 No 5 Yes								
11.12	Are facilities (dedicated storage) set up to support UIL sanctioned athletics for golf (high school only)?						N/A	Comments	0.00 0.00
	1 No 5 Yes								
11.13	Are facilities (dedicated storage) set up to support UIL sanctioned athletics for swimming (high school only)?						N/A	Comments	0.00 0.00
	1 No 5 Yes								
11.14	Are facilities set up to support UIL sanctioned athletics for wrestling (high school only)?						N/A	Comments	0.00 0.00
	1 No 5 Yes								
11.15	Are facilities set up to support UIL sanctioned athletics for baseball (high school only)?						N/A	Comments	0.00 0.00
	1 No 5 Yes								
11.16	Are facilities set up to support UIL sanctioned athletics for softball (high school only)?						N/A	Comments	0.00 0.00
	1 No 5 Yes								
11.17	Are facilities (dedicated space outside of the gymnasium) available to support competitive spirit activities for cheerleading and drill team?	1						Comments	0.25 0.25
	1 No 5 Yes								
11 - Athletics and Wellness (cont.)		1	2	3	4	5	N/A		
11.18	How do the athletics fields align with FMP Campus Improvements? Turf Field, Parking lot lighting, ADA accessible amenities (high School only)						N/A	Comments	0.00 0.00
	1 Very unsatisfactory - No turf, inaccessible, no site lighting 2 Unsatisfactory - No turf/field in poor condition, some accessibility concerns, poor site lighting 3 Average - Field in adequate condition, needs some updates or renovations to function well 4 Satisfactory - Turf field in good condition, good ADA access and site lighting 5 Very Satisfactory - Turf field with excellent maintenance, excellent ADA access for spectators and athletes, excellent site lighting N/A Does not apply.							Monitoring answer, but doesn't affect overall score.	

12 - Food Services							10.00	60%	
12.1	Is the Dining Commons appropriately configured per the ed spec?			3			Comments	1.00	3.00
1	Very unsatisfactory - Too small, missing program spaces	Slightly undersized per current enrollment and capacity. Should be 6,600 SF for enrollment (1,176) and 6,100 SF if school was at capacity (1078). Currently at 5,400 SF but there is outdoor seating in the courtyard that could accommodate overflow. Adequate circulation space and two nicely sized serving lines.							
2	Unsatisfactory - Too small, poor condition, only one option for eating space provided, inadequate circulation								
3	Average - Adequate size and condition, needs updates or renovations to function well								
4	Satisfactory - Good size and condition, good circulation, multiple options for eating space (ex: connection to outdoor eating space)								
5	Very Satisfactory - Generous size, excellent condition and circulation, multiple options for eating space (ex: connection to outdoor eating space)								
N/A	Does not apply								
12.2	Are the Food Services support spaces appropriately configured per the ed spec?			3			Comments	1.00	3.00
1	Very unsatisfactory - None provided	Kitchen is slightly undersized per Ed Spec.							
2	Unsatisfactory - Too small, disconnected, poor condition								
3	Neutral - Adequate size, average condition, needs updates or renovations to function well								
4	Satisfactory - Good size, connected, good condition								
5	Very Satisfactory - Generous size, connected, excellent condition								
N/A	Does not apply								
13 - Media Resources							30.00	57%	
13.1	Is the Library/Media Center easily accessible for the occupants and visitors to the school?		2				Comments	1.00	2.00
1	Very unsatisfactory - Not accessible	Heart of main building but difficult to find from current entry.							
2	Unsatisfactory - Limited access, difficult to find, no transparency								
3	Average - Adequate accessibility, needs updates or renovations to function well								
4	Satisfactory - Accessible, easy to find, good transparency, good condition								
5	Very Satisfactory - Accessible, easy to find, excellent transparency, excellent condition								
N/A	Does not apply								

13 - Media Resources - Continued		1	2	3	4	5	N/A			
13.2	How well does the Library/Media Center support quiet study?		2					Comments	1.00 2.00	
1	Very unsatisfactory - No quiet study spaces							One large triple height daylit space (from skylights above). There are studio spaces that have windows (at one point exterior windows) connecting the library space at second and third levels, and the acoustics between studios and library is not adequate.		
2	Unsatisfactory - One area in poor condition, poor acoustic privacy									
3	Average - One or more areas provided, needing updates or renovations to function well									
4	Satisfactory - Clusters or small rooms adjacent to media center, good condition, good acoustic privacy									
5	Very Satisfactory - Multiple clusters or small rooms adjacent to media center, excellent condition, excellent acoustic privacy									
N/A	Does not apply									
13.3	How well does the Library/Media Center support social interaction?				4			Comments	1.00 4.00	
1	Very unsatisfactory - No space									
2	Unsatisfactory - Too small, poor condition, layout and furnishings do not support informal interaction well									
3	Average - Adequate size and condition, needs updates or renovations to function well.									
4	Satisfactory - Good size, good condition, layout and furnishings support informal interactions									
5	Very Satisfactory - Generous size, excellent condition, layout and furnishings support informal interactions									
N/A	Does not apply									
13.4	How well does the Library/Media Center support collaborative work in small groups (4-8 students)?		2					Comments	1.00 2.00	
1	Very unsatisfactory - No breakout rooms, no flexible furniture, no support							No breakout spaces for smaller groups. Can be achieved through furniture solutions.		
2	Unsatisfactory - Too small, one area, poor condition									
3	Average - Adequate size, multiple areas provided, needing updates or renovations to function well									
4	Satisfactory - Clusters or small rooms adjacent to media center, flexible furniture, good condition									
5	Very Satisfactory - Multiple clusters or small rooms adjacent to media center, flexible furniture, excellent condition									
N/A	Does not apply									
13.5	How well does the Library/Media Center support collaborative work in larger groups (10-25)?				4			Comments	1.00 4.00	
1	Very unsatisfactory - No gathering areas							Yes, quite well.		
2	Unsatisfactory - Too small, one common space, limited seating, poor condition									
3	Average - Adequate size, one common space, needs updates or renovations to function well									
4	Satisfactory - Good size, multiple common spaces with seating, good condition									
5	Very Satisfactory - Generous size, multiple commons spaces with seating, excellent condition									
N/A	Does not apply									

13 - Media Resources - Continued		1	2	3	4	5	N/A		
13.6	How well does the Library/Media Center support technology?			3				Comments	1.00 3.00
1	Very unsatisfactory - No vis comm tools							Very small projection screen.	
2	Unsatisfactory - Outdated, poorly functioning, or insufficient								
3	Average - Mix of old and new whiteboards/projectors/etc.								
4	Satisfactory - projectors, marker boards, smart boards in most spaces - good condition								
5	Very Satisfactory - projectors, marker boards, smart boards in most spaces - new condition								
N/A	Does not apply								
14 - Technology		1	2	3	4	5	N/A		20.00 50%
14.1	How well equipped are the facilities with instructional technology?				4			Comments	1.00 4.00
1	Very unsatisfactory - Limited to no technology present in instructional spaces							New edu-displays throughout.	
2	Unsatisfactory - One type of technology present								
3	Average - Multiple types of technology, smart boards. Poor condition. Limited to only certain areas of school.								
4	Satisfactory - Multiple types of technology, smart boards. Good condition.								
5	Very Satisfactory - Multiple types of technology, smart boards. Excellent condition								
N/A	Does not apply								
14.2	Is there an adequate number of power and data outlets in learning spaces?		2					Comments	1.00 2.00
1	Very unsatisfactory - Outlet configuration does not support digital devices throughout school (1 per wall)							Additional outlets are needed and have appropriate capacity for higher voltage.	
2	Unsatisfactory - Outlet configuration support digital devices only in certain areas of school (2 per wall)								
3	Average - Outlet configuration support digital devices but limited capacity throughout school (3 per wall)								
4	Satisfactory - Outlet configuration support digital devices with adequate coverage and capacity in limited locations (>3 per wall)								
5	Very Satisfactory - Excellent outlet configuration to support digital devices throughout school (>3 per wall)								
N/A	Does not apply								

14 - Technology (cont.)		1	2	3	4	5	N/A			
14.3	Are there adequate charging locations for devices?		2					Comments	1.00 2.00	
1	Very unsatisfactory - Not enough charging locations throughout school for 1:1							Library has some charging towers, but limited throughout school.		
2	Unsatisfactory - Charging locations, haphazard locations, and inadequate in size for number of devices									
3	Average - Charging locations well organized but not enough capacity for 1:1									
4	Satisfactory - Charging locations, haphazard locations, but supports 1:1.									
5	Very Satisfactory - Charging locations throughout school to support 1:1.									
N/A	Does not apply									
14.4	Is there adequate AV for presentations spaces – cafeteria, gym, aux gym?		2					Comments	1.00 2.00	
1	Very unsatisfactory - AV not present in one or more space							Gym/theater A/V is dated and needs replacing.		
2	Unsatisfactory - AV undersized for room. Poor condition									
3	Average - AV adequately sized / poor condition OR AV undersized / average condition									
4	Satisfactory - AV adequately sized for room. Average Condition.									
5	Very Satisfactory - AV adequately sized for room. Excellent condition.									
N/A	Does not apply									
14.5	Is there digital media signage at the reception area?	1						Comments	0.00 0.00	
1	Very unsatisfactory - No digital media present in reception area							Does not affect score.		
2	Unsatisfactory - Undersized, poor condition									
3	Average - Adequately sized / poor condition OR undersized / adequate condition									
4	Satisfactory - Media signage present, good sized, good condition									
5	Very Satisfactory - Generously sized, excellent condition									
N/A	Does not apply									

