

## Educational Suitability Summary Report

Nelson Field

Date: 02/19/2021

Nelson Field is a sports stadium in northeast Austin with a seating capacity for approximately 12,000 spectators. The original buildings were constructed in 1963. The stadium hosts multiple AISD high school football, baseball, soccer and track events. The multi-use facility serves as home stadium for LBJ Early College High School, Anderson High School, Eastside Memorial High School and Northeast Early College High School. The facility is approaching a 60-year lifetime, and many areas and support spaces need upgrades, both for aesthetics and functionality.

The facility has a stadium, baseball field, football field, field house and press boxes. The press boxes are sufficient in size but need improvements. They have worn countertops and only one small restroom for two press box levels. The press box is not ADA accessible. The appearance of the entire facility needs to be updated, including power washing the concrete. There are possible mold issues on the CMU walls and some parts of the exposed concrete structure. Locker room spaces are small and need updates to function properly. Restrooms in the locker rooms are dated and need to be modernized with new stalls and plumbing fixtures. Severe damage to restroom plumbing was a result of Austin's historic freeze, causing major ruptures. There is a need for more storage space in the facility.

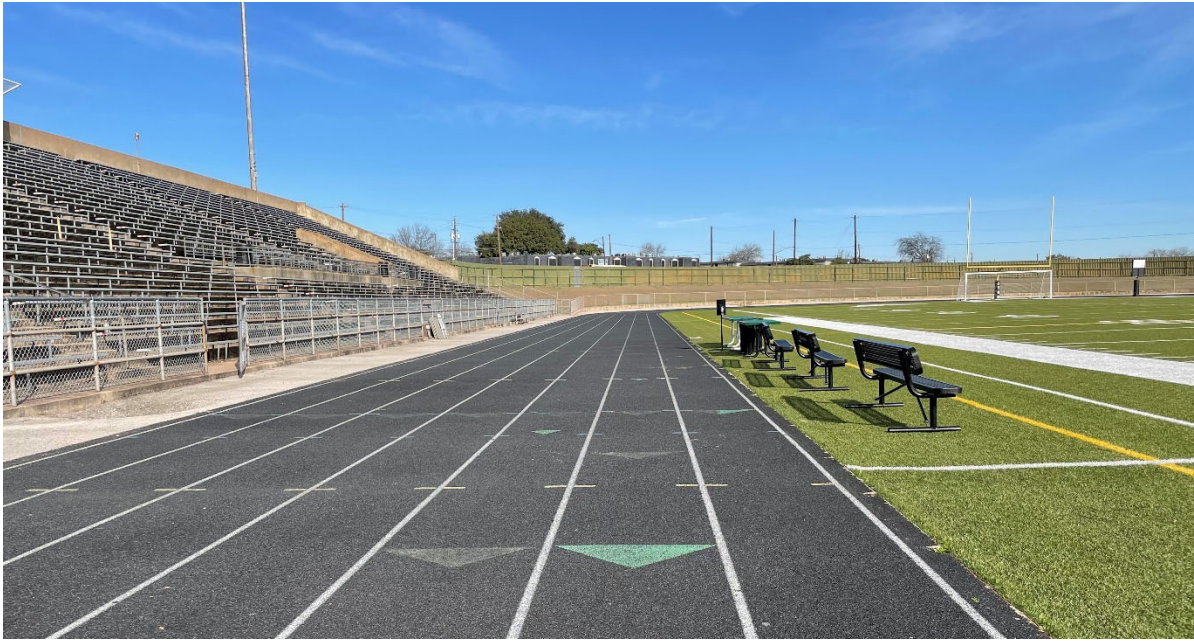
### Interview Overview

AISD interviewees included Kevin Hendrickson, Leal Anderson, Lou Mora, Lynn Pool and Tamey Williams Hill. The focus of the discussion was modernizing the facility and making improvements to the track and fields.

Interviewees mentioned the ticket booths lack air-conditioning and are uncomfortable for the users. The press boxes have small, split air conditioning systems that are old and inadequate for the space. The lack of handrails at the stadium seating is a problem, especially for those with mobility issues. There needs to be an accessible ramp at the field house men's restroom. The track needs to be expanded to eight lanes; the existing seven-lane track makes it difficult to hold events. There is a request to find a way for patrons to access the track level. The baseball and football fields need to be crowned and leveled. Scoreboards work but need to be modernized.

One safety concern discussed was the lack of parking during major events. The stadium shares the site with the Nelson bus terminal, which limits parking. Visiting teams end up parking on the home side and this can create problems between opposing teams' spectators. [REDACTED]

**Supporting Photographs**



*Existing bleachers are aluminum and appear in adequate condition, but handrails are needed. Interviewees indicated track needs to be updated. An eight-lane track and a ramp to access the track from the bleachers area are desired.*



*Interviewees desire a modernization for the exterior of the building.*



**Supporting Photographs**



*Concrete on the exterior of the stadium shows signs of aging.*



*Field appears to be in good condition. Scoreboard needs to be modernized.*



Supporting Photographs



Reported pest issues underneath. More lighting is needed in this area.



Restrooms are dated. **Windows and doors do not function properly.**

**Supporting Photographs**



*Exterior view of the concession stand. Needs to be updated and modernized.*



*View of one of the press box spaces. Furniture is dated and there is no accessible entrance to the press box.*



**Supporting Photographs**



*Split AC systems does not function well.*

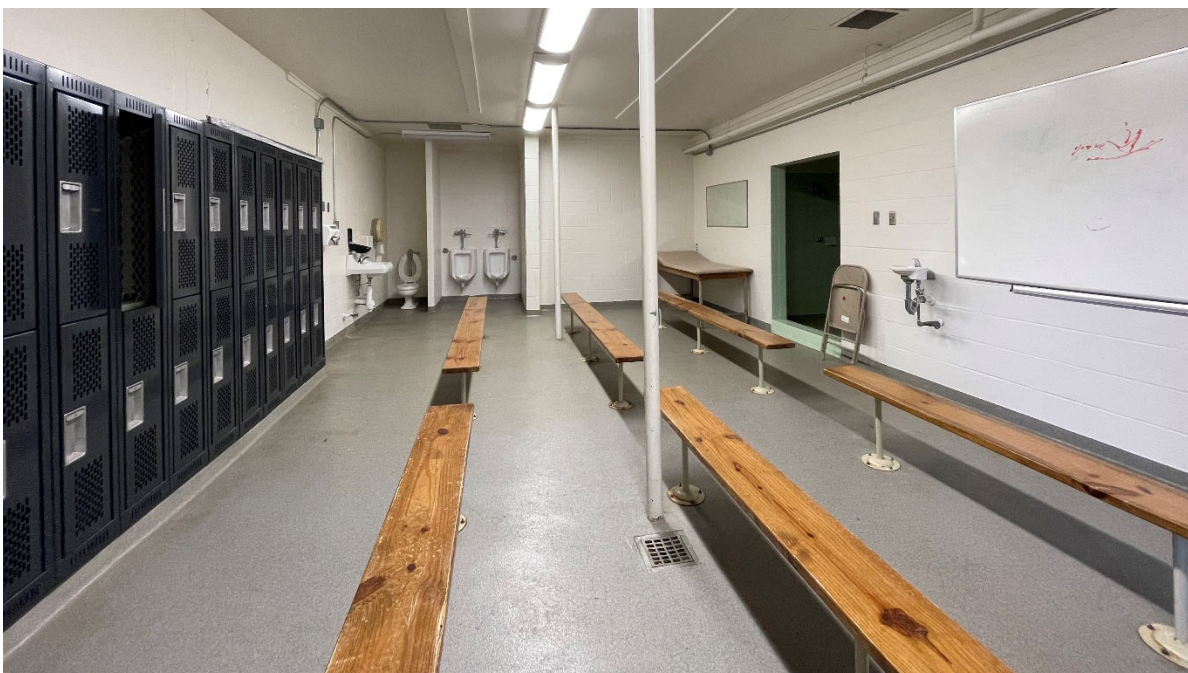


*Restrooms for the press box are not accessible and in very poor condition.*

**Supporting Photographs**



*View of the existing field house building. The building appears in decent condition from the outside despite its age.*



*Locker room space is inadequate and needs to be modernized. No accessible restrooms or showers are provided and there are no partitions at the stalls.*