

Educational Suitability Summary Report

Zavala Elementary School

Date: 01/04/2021

Score 49% Unsatisfactory

Zavala Elementary School serves an enrollment of 230 students in east Austin. The campus was originally built in 1937 and is now included in the National Register of Historic Places. Zavala is known for its academic focus on STEM (Science, Technology, Engineering and Math) initiatives. The campus serves pre-K through fifth grade and begins with outdoor learning and agricultural studies at the pre-K level, and continues with 3D printing, coding, a computer science partnership with Texas State, and an engineering partnership with UT Engineering. In addition to the STEM focus, it also provides signature programs in Creative Learning Initiative and Social-Emotional Learning.

The campus is situated on a compact site within an east Austin city block. The campus is bordered by the Oswaldo A.B. Cantu/Pan American Recreation Center and Pan American Neighborhood Park. The campus has a small parking lot for staff and typically cannot accommodate all teachers and staff, but street parking is available. The main building was originally built in 1937 therefore certain features of the building makes it difficult to align with the current AISD education specifications.

The campus has had additions in previous years, but those studios still have minimal flexibility and lack any collaboration spaces. Studios for two small special education programs are in typical studios without windows; however, those students spend most of their day in their grade level classrooms. The campus prides itself on its auditorium that is accessible for evening events and functions.

Interview Overview

The interview with Principal Hill covered the current conditions of the campus and areas for improvement. From this discussion, it was determined that among the higher priority items are collaboration spaces, conference rooms, and a better space designed specifically for the school's signature STEAM program. Currently, STEAM is held in a larger studio of the original building and accommodates the program but does not have the technology and power necessary to function well.

The campus functions well for evening events with the front entry situated at the auditorium.

There is no place dedicated for meetings. The principal expressed a need for conference rooms and office space. Currently, an office space with large windows to the main corridor room is serving as a counselor's office and curtains are used to provide privacy.

Throughout the campus, none of the learning neighborhoods have collaboration spaces. Special education spaces do not have a washer and dryer. The principal expressed a need for a sensory room for students and a rest space for teachers and staff. Some additional needs for the campus include more adult restrooms and a digital marquee sign to help provide information to parents and the community.

Another concern is the need for warning markings on the kiln.

The campus loves their exterior spaces at the school. There could be some improvements to help them function better. A central courtyard has adequate space but lacks enough shade and furniture to function well. There are large sitting stones at the front of the campus, but the space is not well-developed and would need some maintenance to serve as an outdoor studio. This space has some natural shade with the large trees but would benefit from a canopy shade structure.

Assessment Findings

The Educational Suitability Assessment of Zavala Elementary School earned a 49% overall score and places the campus in a category of Unsatisfactory. The assessment consists of seven General Building categories and seven Academic categories to determine areas that need more attention.

Very Unsatisfactory Categories (0-35%):

Exterior

Score is very unsatisfactory.

Bus, car and vehicular all happen at the same location. The site does not permit any drive lane for either parent or bus drop-off or pickup for students. There is only a small parking lot for the campus that is at the opposite end of the main entry.

Technology

Score is very unsatisfactory.

Due to the age of the main building, there is a lack of power and data outlets in the learning spaces. The studios do not have centralized charging locations and use extension cords throughout the campus.

Administration Spaces

Score is very unsatisfactory.

The checkpoint at the reception area is small and not in good condition and does not feel very welcoming with minimal furniture. Acoustics among the spaces in the administration are not good and conversations can easily be heard between the office spaces. The school reports that this is not an issue.

Unsatisfactory Categories (36-50%):

General Building

Score is unsatisfactory.

Interior primary circulation routes are within 8-10 feet in width. The campus does not have a dedicated meeting space/ community room that can be used without gaining access to the entire school.

Security

Score is unsatisfactory.

Academics & Learning

Score is unsatisfactory.

Both older and newer studios are not flexible. The campus does not have any collaboration spaces or rooms for small groups. Special education takes place in a normal studio and does not have any access to daylight. The support spaces for special education are also lacking.

PE and Wellness

Score is unsatisfactory.

Gym is dated with old equipment and is undersized at 2,500 SF. The campus only has one small playground in the front. The campus typically uses the adjacent public park, which was recently redone with a grant from Dell Children's Hospital. The storage is mixed in with large HVAC equipment.

Food Services

Score is unsatisfactory.

The cafeteria is very small with columns located within the main space. The HVAC system is very poor in the cafeteria. The space does not have a kitchen office.

Average Categories (51-65%):

Environmental Quality

Score is average.

Sound from outside studio is slight. Lighting in most studios is dim and not very bright, but most are supplemented by large windows with abundant natural daylight. All studios except two have access to natural light. Multiple places on campus have ant infestations. The school reports that this has been taken care of.

Controllability of Systems

Score is average.

Most studios appear to have a thermostat for individual control; however, some have old units next to windows. Studios in the original building only have a single light switch. Newer studios have two switches to control alternating rows of lights.

Furniture, Fixtures, Equipment

Score is average.

The campus has inconsistent types of furniture throughout studios. Most furniture accommodates rapid reconfiguration, but some can be cumbersome to move.

Visual and Performing Arts

Score is average.

Campus has an auditorium for performances in the original part of the building. The school reports the seats have been replaced. The auditorium is dated and needs some updates to function better, including HVAC upgrades.

Educational Suitability Summary Report
Zavala Elementary School

Media Resources

Score is average.

Library can be accessed to visitors for evening functions but lacks signage to locate. The library lacks spaces for quiet study and does not have breakout rooms but does have areas with a variety of furniture to encourage social interaction.

Satisfactory Categories (66-80%):

Outdoor Learning and Activity

Score is satisfactory.

Courtyard space is located centrally and has access to water with a learning pond. Pan American Neighborhood Park has equipment in good condition and an outdoor stage.

Supporting Photographs

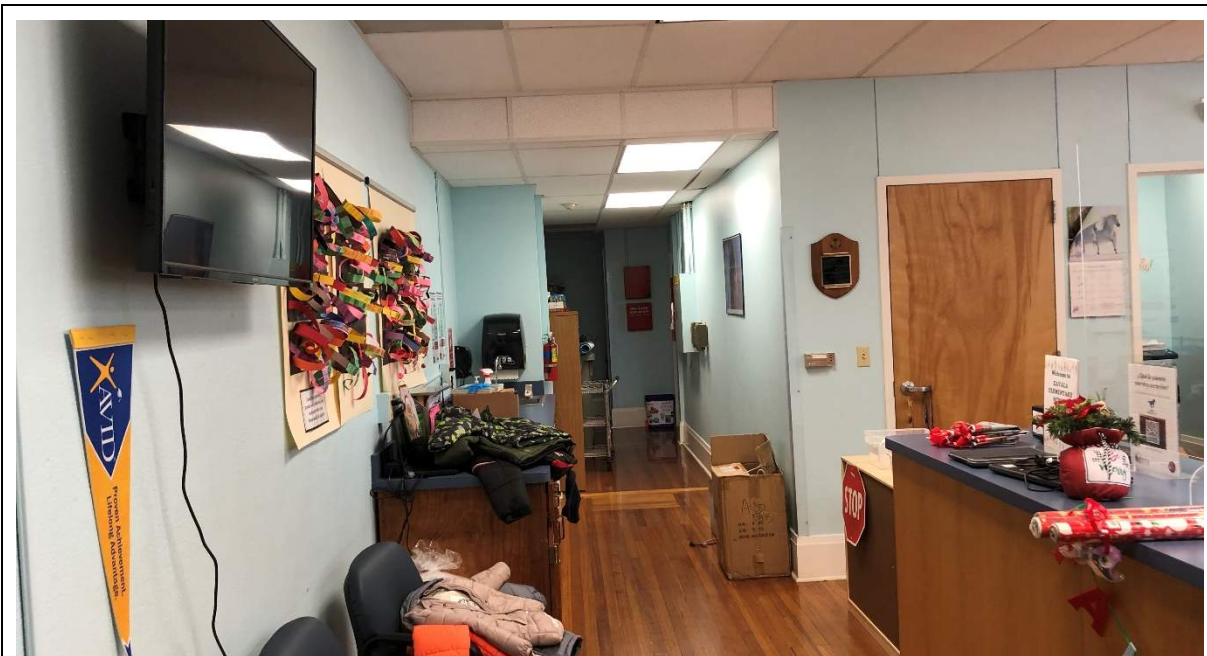


Dedicated auditorium accommodates evening functions but is dated and needs some improvements to function better.



Front entry of campus [redacted] is just outside auditorium with sign direction to main office.

Supporting Photographs



Main office front desk checkpoint is small and has limited seating area.

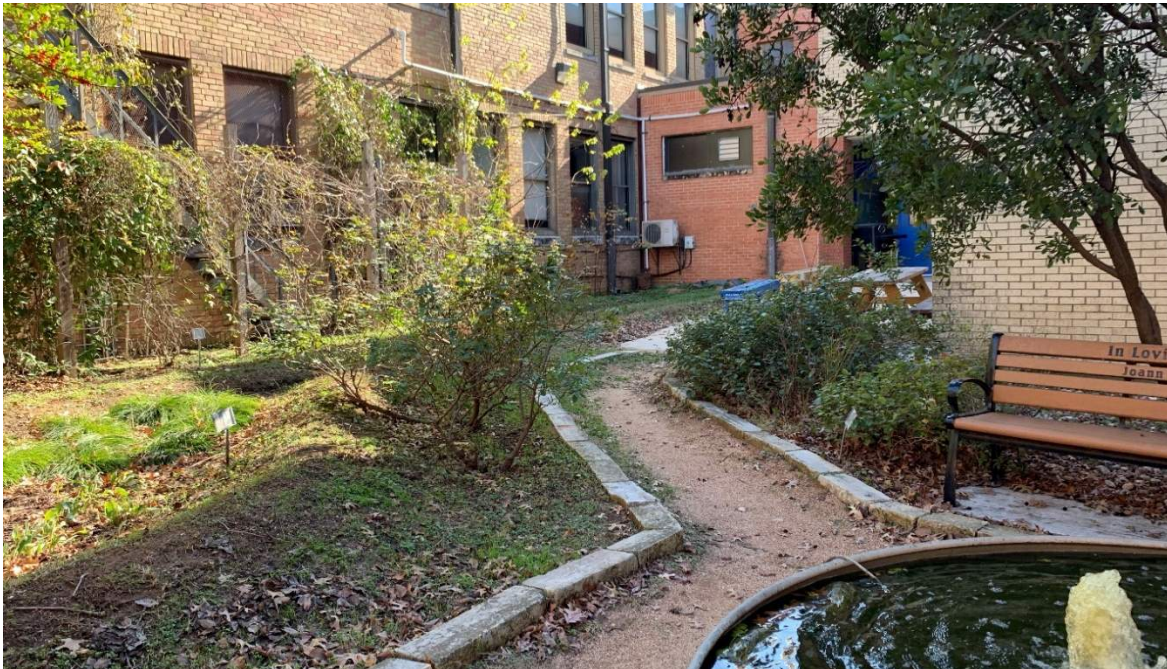


Studio in original building built in 1937. Original hardwood floors in good condition. Furniture is 3 years old and is in good condition and able to reconfigure.

Supporting Photographs

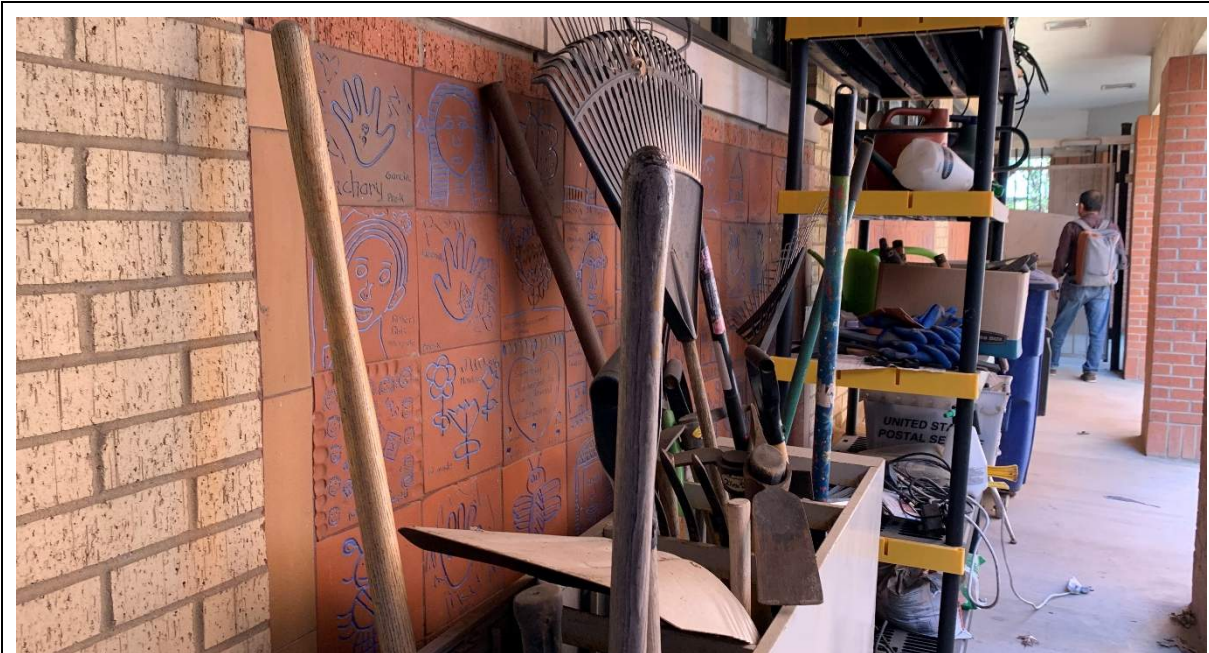


Newer studio with less flexible furniture with larger tables and loose chairs. School notes teacher chose this furniture configuration.



Courtyard as outdoor learning studio with learning pond located centrally to the campus. Water in pond needs maintaining and overall space needs some updates to function well. School reports they have not had their upkeep days due to Covid.

Supporting Photographs

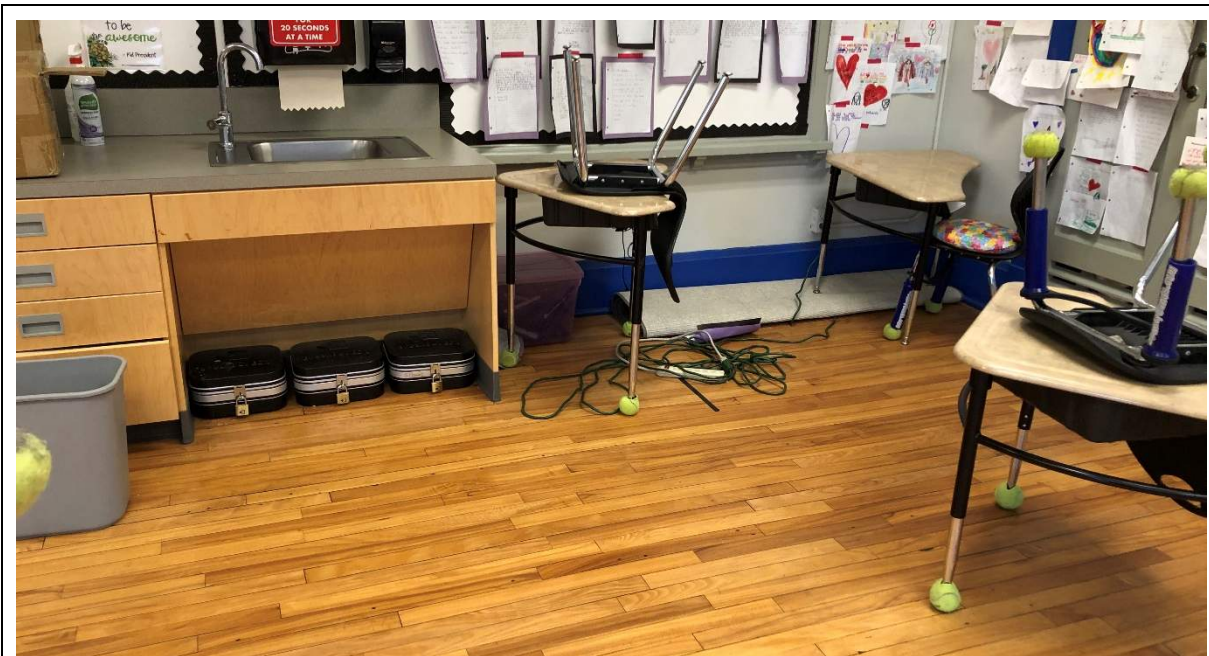


Storage outside library for gardening equipment. More storage needed for outdoor learning areas.

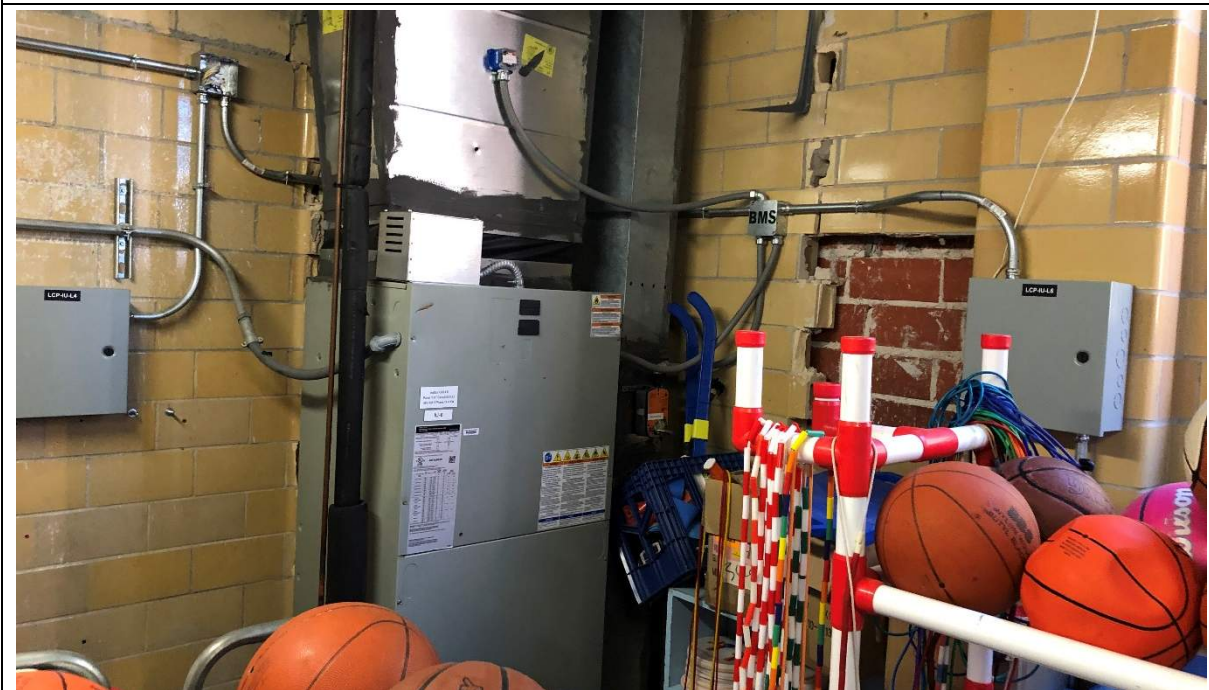


Outdoor garden space with small shade structure and no furniture. Beyond is the small playground on campus. Campus is adjacent to a public park, Pan American Neighborhood Park.

Supporting Photographs



Use of extension cables and power strips in typical studios from limited outlets.



Storage for gym equipment shared with mechanical and electrical room.



Austin ISD Educational Suitability Assessment Criteria

General Building

School Name

Zavala Elementary School

Walk Attendees:

Kendall Claus & Anacleto Rojas Jr.

Date:

1/4/2021

1 - Exterior		1	2	3	4	5	N/A	8.75	31%	
1.1	Does the site permit desirable separation of vehicular, bus and pedestrian traffic?	1						Comments	1.00	1.00
	1 Very unsatisfactory - Bus, car and pedestrian all happen at the same location									
	2 Unsatisfactory - Cars and buses mix, pedestrians are separated									
	3 Average - Buses, cars, and pedestrians are separate but stack space is small									
	4 Satisfactory - Buses, cars, and pedestrians are separate but drop off does not have a canopy or a holding place like a commons or cafeteria									
	5 Very satisfactory - Buses, cars, and pedestrians are separate and drop off area has a canopy and destination									
	N/A Does not apply									
1.2	Is the building easily identified with appropriate signage and community wayfinding?			3				Comments	0.25	0.75
	1 Very unsatisfactory - Campus has no signage / wayfinding	Most signage is not apparent at exterior or interior.								
	2 Unsatisfactory - Signage/wayfinding is faded/hidden									
	3 Average - Signage / wayfinding visible but not apparent									
	4 Satisfactory - Signage / wayfinding is visible but not good condition									
	5 Very satisfactory - Signage and wayfinding is visible and easy to use									
	N/A Does not apply									

1 - Exterior (cont.)		1	2	3	4	5	N/A			
1.3	Is the dumpster accessible for trash / compost disposal?		2					Comments	0.50	1.00
1	Very unsatisfactory - No compost present, route has obstacles (stairs, curbs, barriers) to dumpster									
2	Unsatisfactory - Compost is present. Route has obstacles to dumpster									
3	Average - Compost is present (<100' to cafeteria), Route to dumpster is free and clear but the two are not directly adjacent.									
4	Satisfactory - Compost and dumpster are directly adjacent and route is barrier free									
5	Very Satisfactory - Compost and dumpster are directly adjacent and route is barrier free. Dumpster are shaped / positioned so people of all heights can access it.									
N/A	Does not apply									
2 - Outdoor Learning and Activity		1	2	3	4	5	N/A	15.00	67%	
2.1	Are outdoor studios and support spaces appropriately configured per the ed spec?		2					Comments	1.00	2.00
1	Very unsatisfactory - No dedicated outdoor studios							Natural shade provided at front outdoor learning space. Small outdoor shade structure at classroom wing, but not well-developed space. Central courtyard has some development but somewhat small.		
2	Unsatisfactory - Too small, poor condition, disconnected from learning spaces, no flexibility, no shade provided									
3	Average - Adequate size, adequate condition, needs some renovations or updates to function well, 50% or less shade coverage over studio area									
4	Satisfactory - Good size, good condition, connected to learning spaces, good flexibility, more than 50% shade coverage over studio area									
5	Very satisfactory - Generous size, excellent condition, connected to learning spaces, excellent flexibility, full shade coverage over studio area									
N/A	Does not apply									
2.2	Are active playgrounds (elementary only) and support spaces configured per the ed spec?			3				Comments	1.00	3.00
1	Very unsatisfactory - No dedicated active playground							City park, Pan Am Park playground.		
2	Unsatisfactory - Too small, poor condition, no shade provided									
3	Average - Adequate size, adequate condition, needs some renovations or updates to function well, 50% or less shade coverage over play structure									
4	Satisfactory - Good size, good condition, more than 50% shade coverage over play structure									
5	Very satisfactory - Generous size, excellent condition, full shade coverage over play structure									
N/A	Does not apply									

2 - Outdoor Learning and Activity (cont)		1	2	3	4	5	N/A				
2.3	Are gardens and support spaces appropriately configured per the ed spec? (evaluation on infrastructure not condition of plants)			3					Comments	0.00	0.00
1	Very unsatisfactory - No dedicated gardens							Monitoring answer, does not affect score for Outdoor Learning and Activity.			
2	Unsatisfactory - Too small, poor condition, disconnected from learning spaces, no flexibility, no accessible water source										
3	Average - Adequate size, adequate condition, needs some renovations or updates to function well, water source is difficult to access										
4	Satisfactory - Good size, good condition, connected to learning spaces, good flexibility, water source is accessible with 100 ft hose										
5	Very Satisfactory - Generous size, excellent condition, connected to learning spaces, excellent flexibility, water source is less than 50ft from the garden or has irrigation										
N/A	Does not apply										
2.4	Are the rain gardens and/or cisterns appropriately configured per the ed spec?			3					Comments	0.00	0.00
1	Very unsatisfactory - No rain gardens or cisterns							Monitoring answer, does not affect score for Outdoor Learning and Activity.			
2	Unsatisfactory - Too small, poor condition, not functioning, disconnected										
3	Average - Adequate size, adequate condition, is connected, needs some renovations or updates to function well										
4	Satisfactory - Good size, good condition, functions properly										
5	Very Satisfactory - Generous size, excellent condition, exceptional functionality, connected to learning spaces, educational signage provided										
N/A	Does not apply										
2.5	Does the school have animal husbandry? (optional)	1							Comments	0.00	0.00
1	No										
5	Yes										
2.6	Does the school have nature loop trails? (optional)	1							Comments	0.00	0.00
1	No										
5	Yes										
2.7	Does the school have a learning pond? (optional)					5			Comments	0.00	0.00
1	No										
5	Yes										
2.8	Does the school have a grass play field and walking trail?					5			Adjacent public park has these amenities	1.00	5.00
1	No										
5	Yes										

3 - General Building		1	2	3	4	5	N/A	11.25	44%
3.1	Are interior circulation routes wide enough to safely and effectively accommodate student movement?				4			Comments	0.50 2.00
1	Very unsatisfactory - Primary circulation is 5'-0" to 6'-0" wide								
2	Unsatisfactory - Primary circulation is 6'-0" to 7'-0" wide								
3	Average - Primary circulation is 7'-0" to 8'-0" wide								
4	Satisfactory - Primary circulation is 8'-0"-10'-0" wide								
5	Very satisfactory - Primary circulation is 10'-0"+ wide								
N/A	Does not apply								
3.2	Are community use areas arranged so that the school can allow night functions without full school access?		2					Comments	0.75 1.50
1	Very unsatisfactory - Cafeteria, gym, and library cannot be accessed after hours	Cafeteria and gym are not accessible for night functions without school access. Only the auditorium is accessible for evening functions.							
2	Unsatisfactory - Only one of the public spaces (Cafeteria, Gym and Library) can be accessed from parking and secured after hours								
3	Average - Only two of the public spaces can be accessed from parking and secured after hours								
4	Satisfactory - All of the public spaces can be accessed from parking and secured from the rest of the building but not individually								
5	Very satisfactory - Cafeteria, gym, and library can be accessed from parking and locked off from rest of campus for night/evening use with their own entrance								
N/A	Does not apply								
3.3	Is there a community room that is a dedicated meeting space outside of school function?	1						Comments	0.75 0.75
1	Very unsatisfactory - No dedicated community room								
2	Unsatisfactory - Community room but within school function, no access after school hours								
3	Average - Community room, moderate size, but need some renovations or updates to function well								
4	Satisfactory - Community room, good size /layout, meets needs /functions well								
5	Very Satisfactory - Community room, generous size, nice condition, functions appropriately outside of school function								
N/A	Does not apply								
3.4	Does the general appearance of the school convey pride for the students and community?			3				Comments	0.25 0.75
1	Very unsatisfactory - General appearance is poor	Aged campus with some additions but appears in good shape and well maintained.							
2	Unsatisfactory - General appearance is aged but ok								
3	Average - General appearance is good								
4	Satisfactory - General appearance shows pride in campus and student works								
5	Very Unsatisfactory - General appearance shows pride in campus and student works and is welcoming to the community								
N/A	Does not apply								

4 - Security		1	2	3	4	5	N/A	16.25	
4.1	Does the facility have key card access at all major entries?							0.25	
1	Very unsatisfactory - No entries								
2	Unsatisfactory - 1/4 of major entries								
3	Average - 1/2 of major entries								
4	Satisfactory - 3/4 of major entries								
5	Very satisfactory - All of major entries								
N/A	Does not apply								
4.2	How adequate is site lighting and security for the campus overall?							1.00	
1	Very unsatisfactory - No exterior lighting, no secure perimeter								
2	Unsatisfactory - Lighting is limited to front entry only, parking lot lighting poor, security is minimal								
3	Average - Lighting at all night-use entries and parking lot, but poor condition. Security is moderate								
4	Satisfactory - Lighting at all night-use entries and parking lots, good condition, signage less visible, perimeter is well secured but needs updates								
5	Very satisfactory - Signage, parking lots, and entries are well lit, visible and easy to use, perimeter is very secure								
N/A	Does not apply								
4.3	Is the main office located at the school entry and configured with a secure vestibule to the main corridor?							1.00	
1	Very unsatisfactory - No secure vestibule, office located far from main entry, allows visitors access to school unsupervised								
2	Unsatisfactory - No secure vestibule, office located somewhat far from main entry, minimal supervision of visitors								
3	Average - Office close to entry, views of front door, but no secure vestibule								
4	Satisfactory - Office is well-located with a secure vestibule, but needs updates								
5	Very satisfactory - Office well-located with secure vestibule and all appropriate security features								
N/A	Does not apply								
4.4	Is there enough interior transparency for faculty to passively supervise learners and their activities who are not in studios?		2					1.00	2.00
1	Very unsatisfactory - No transparency of walls								
2	Unsatisfactory - Limited transparency in certain locations								
3	Average - Good transparency in certain locations but inadequate or missing in other locations of school								
4	Satisfactory - Adequate transparency throughout the school								
5	Very satisfactory - Excellent transparency throughout the school								
N/A	Does not apply								

There is limited interior transparency for faculty to passively supervise activities not in their studios.

5 - Environmental Quality		1	2	3	4	5	N/A	25.00	56%	
5.1	How are acoustics in studios in general?			3				Comments	1.00	3.00
1	Very unsatisfactory - Recognized word/sound from adjacent studio/corridor							Sound from outside studio is slight.		
2	Unsatisfactory - Audible sound from adjacent studio/corridor									
3	Average - Slight sound from outside room									
4	Satisfactory - Walls to deck insulated only white noise from mechanical system									
5	Very satisfactory - Able to hear quiet speaking from across the room									
N/A	Does not apply									
5.2	Is the studio artificial lighting adequate quality?		2					Comments	1.00	2.00
1	Very unsatisfactory - Sporadic lights work, glare, less than 20 FC							Lighting dim in studios.		
2	Unsatisfactory - 10-19 FC or serious glare									
3	Average- 20-29 FC minor glare									
4	Satisfactory - 30-39 FC and no glare									
5	Very satisfactory - 40+ FC and no glare									
N/A	Does not apply									
5.3	Is there access to natural light in studios?				4			Comments	1.00	4.00
1	Very unsatisfactory - No learning spaces have natural light							2 studios without access to natural light.		
2	Unsatisfactory - 1-25% of learning spaces have natural light or windows are too small to let in light									
3	Average - 26-50% of learning spaces have natural light									
4	Satisfactory - 51-75% of learning spaces have natural light									
5	Very satisfactory - 76-100% of learning spaces have natural light									
N/A	Does not apply									
5.4	Is there access to outside views from learning spaces?			3				Comments	1.00	3.00
1	Very unsatisfactory - No learning spaces have views									
2	Unsatisfactory - 1-25% of learning spaces have views or windows are too small to see out									
3	Average - 26-50% of learning spaces have views									
4	Satisfactory - 51-75% of learning spaces have views									
5	Very satisfactory - 76-100% of learning spaces have views									
N/A	Does not apply									

5 - Environmental Quality (cont.)		1	2	3	4	5	N/A				
5.5	Does the building have odor or pest problems?		2					Comments	1.00	2.00	
1	Very unsatisfactory - Evidence of both pests and odors							Multiple places with ant infestation.			
2	Unsatisfactory - Evidence of pests or odors										
3	Average - Limited evidence of pests, no odors										
4	Satisfactory - No evidence of pests / odors, school cleanliness in good condition										
5	Very Satisfactory - No evidence, school cleanliness in excellent condition										
N/A	Does not apply										
6 - Controllability of Systems		1	2	3	4	5	N/A		12.50	60%	
6.1	Does the studio thermostat allow for individual control?					5		Comments	0.50	2.50	
1	No										
5	Yes										
6.2	Are shades provided to control natural light in learning spaces?			3				Comments	1.00	3.00	
1	Very unsatisfactory - No, windows are covered with boards/paper										
2	Unsatisfactory - No, windows have no light control										
3	Average - Yes, but poor condition blinds										
4	Satisfactory - Yes, blinds										
5	Very satisfactory - Blackout shades										
N/A	Does not apply										
6.3	What is the quality of lighting controls in the studios?		2					Comments	1.00	2.00	
1	Very unsatisfactory - Single switch only per room							Studios in the original building only have a single light switch. Newer studios have two switches to control alternating rows of lights.			
2	Unsatisfactory - Alternating rows switch off										
3	Average - Alternating lamps in single fixtures switch off										
4	Satisfactory - Tri level switching										
5	Very satisfactory - Dimmable										
N/A	Does not apply										

7 - Furniture, Fixtures & Equipment		1	2	3	4	5	N/A	18.75	65%	
7.1	What is the current condition of the furniture?			3				Comments	0.75 2.25	
1	Very unsatisfactory - Damaged or broken, non-functioning							Inconsistent age and types.		
2	Unsatisfactory - Torn/ bent/ wrong size									
3	Average - Scratched/dented/marked									
4	Satisfactory - Not new, but sturdy and clean									
5	Very satisfactory - New									
N/A	Does not apply									
7.2	Are a variety of furniture types being accommodated throughout the school - learning commons, dining commons, other multi-use spaces?			3				Comments	1.00 3.00	
1	Very Unsatisfactory - Same furniture used in all spaces									
2	Unsatisfactory - Furniture variety in one multi-use space									
3	Average - Furniture variety in more than one multi-use space									
4	Satisfactory - All multi-use spaces have greater than one type of furniture									
5	Very satisfactory - All multi-use spaces have greater than two types of furniture									
N/A	Does not apply									
7.3	How well does furniture accommodate rapid reconfiguration of a space?			3				Comments	1.00 3.00	
1	Very Unsatisfactory - Furniture is fixed or very heavy							Most furniture accommodates rapid reconfiguration, but some can be cumbersome to move.		
2	Unsatisfactory - Furniture does not allow desks to be configured as individuals, small groups, or large groups									
3	Average - Mix of furniture that can reconfigure but is cumbersome to move									
4	Satisfactory - Furniture is flexible for multiple configurations of space									
5	Very satisfactory - Furniture is flexible for multiple configurations of space, easy to move and stack									
N/A	Does not apply									
7.4	Is the furniture ergonomic and size appropriate for grade level?				4			Comments	1.00 4.00	
1	Very unsatisfactory - Desk with attached chair combinations too small for grade level									
2	Unsatisfactory - Desk with attached chair combinations									
3	Average - Mix of studios with tables/loose chairs and desks with fixed seats									
4	Very satisfactory - Tables with loose chairs									
5	Very satisfactory - Tables with loose chairs that allow students to be active									
N/A	Does not apply									

Zero Waste		1	2	3	4	5	N/A	5.00	60%	
Do studios and corridors have blue recycle bins with bilingual instructions and/or image sorting instructions?				3				Comments	0.50 1.50	
1	Very unsatisfactory - There are no recycling and landfill bins and signage are sparse or infrequent. OR there are only landfill bins with no recycling bins.							A score for this category is being recorded, but this category is not calculated in the overall ESA average.		
2	Unsatisfactory - Bins and signage are sparse or infrequent and/or lack clear signage.									
3	Average - 50% of corridors and studios have both a landfill bin and a recycle bin in an accessible location. The containers have clear signage.									
4	Satisfactory - 75% of studios and corridors have a visible landfill and recycle collection containers in an accessible location. The containers have clear signage.									
5	Very satisfactory - All studios / corridors (100%) have visible landfill and recycle collection containers in accessible locations. The containers have clear signage, and the style and format is consistent and uniform across campus.									
N/A	Does not apply									
Does the cafeteria (or wherever meals are served) have at least one of each: green compost bin, blue recycle bin, and landfill bin? Are the bins labelled clearly with bilingual and/or image sorting?				3				Comments	0.50 1.50	
1	Very unsatisfactory- There may be landfill bins, but there are no compost and/or recycle bins. There is not clear sorting signage.							A score for this category is being recorded, but this category is not calculated in the overall ESA average.		
2	Unsatisfactory- Recycle, landfill, and compost bins are present, but the bins are scattered and no co-located next to one another. Signage is absent or inconsistent.									
3	Average- There is at least one waste station with all three bins (recycle, compost, landfill) located with close proximity to one another. The signage is visible and consistent.									
4	Satisfactory- There are several waste stations as described above									
5	Very Satisfactory - There are several waste stations as described above, and additional signage in the cafeteria that encourages recycling/composting.									
N/A	Does not apply									



Austin ISD Educational Suitability Assessment Criteria

Academics - Elementary School

School Name

Zavala ES

Walk Attendees:

Kendall Claus & Anacleto Rojas Jr.

Date:

1/4/2021

8 - Academics & Learning		1	2	3	4	5	N/A	70.00	47%	
8.1	Are studios appropriately configured per the ed spec?			3				Comments	1.00	3.00
1	Very unsatisfactory - Too small, no flexibility, disconnected							Mix of old studios and some newer spaces.		
2	Unsatisfactory - Too small, only one area for all teaching methods, limited flexibility, disconnected									
3	Neutral - Adequate size, multiple areas for different teaching methods, adequate flexibility, limited transparency and connection to other studios and shared learning spaces, needs updates or renovations to function well.									
4	Satisfactory - Good size, multiple areas for different teaching methods, good flexibility, good transparency and connection to other studios and shared learning spaces									
5	Very Satisfactory - Generous size, multiple areas for different teaching methods, excellent flexibility, generous display area and visual teaching tools, excellent transparency and connection with other studios and shared learning spaces									
N/A	Does not apply									
8.2	Do Pre-K and Kinder have appropriate support spaces such as restrooms and storage per the ed spec?				4			Comments	1.00	4.00
1	Very unsatisfactory - None provided									
2	Unsatisfactory - Too small, disconnected, poor condition									
3	Neutral - Adequate size, average condition, needs updates or renovations to function well									
4	Satisfactory - Good size, connected, good condition									
5	Very Satisfactory - Generous size, connected, excellent condition									
N/A	Does not apply									

8 - Academics & Learning (cont.)		1	2	3	4	5	N/A			
8.3	Do studios have appropriate support spaces such as storage per the ed spec?				4			Comments	1.00 4.00	
	1 Very unsatisfactory - None provided									
	2 Unsatisfactory - Too small, disconnected, poor condition									
	3 Neutral - Adequate size, average condition, needs updates or renovations to function well									
	4 Satisfactory - Good size, connected, good condition									
	5 Very Satisfactory - Generous size, connected, excellent condition									
	N/A Does not apply									
8.4	Do typical learning neighborhoods have small group rooms and open collaboration space?	1						Comments	1.00 1.00	
	1 Very unsatisfactory - No breakout rooms or open collaboration spaces are provided							The campus does not have any collaboration spaces or rooms for small groups.		
	2 Unsatisfactory - Too small or too few, poor condition, no flexibility, lacks visual connection to learning neighborhood, poor acoustic privacy									
	3 Average - Adequate size, adequate condition, needs some renovations or updates to function well									
	4 Satisfactory - Good size, good condition and flexibility, transparency and connection to learning neighborhood, acoustic privacy									
	5 Very Satisfactory - Generous size, excellent condition and flexibility, transparency and connection to learning neighborhood, acoustic privacy									
	N/A Does not apply									
8.5	Are general studios large enough to support project-based learning and multiple teaching modalities?			3				Comments	1.00 3.00	
	1 Very unsatisfactory - Too small, no flexibility, does not support project-based learning									
	2 Unsatisfactory - Undersized, decentralized resources, limited flexibility									
	3 Average - Adequate size, needs some renovations or updates to function well									
	4 Satisfactory - Good size, centralized resources, good flexibility									
	5 Very Satisfactory - Generous size, centralized project resources, excellent flexibility									
	N/A Does not apply									

8 - Academics & Learning (cont.)		1	2	3	4	5	N/A				
8.6	Are Maker Spaces and support spaces appropriately configured per the ed spec?			3							
1 Very unsatisfactory - No dedicated maker spaces 2 Unsatisfactory - Too small, poor condition, disconnected from learning spaces, no flexibility 3 Average - Adequate size, adequate condition, needs some renovations or updates to function well 4 Satisfactory - Good size, good condition, connected to learning spaces 5 Very Satisfactory - Generous size, excellent condition, connected to learning spaces N/A Does not apply									Comments	1.00	3.00
8.7	Is there a Professional Learning Center in the learning neighborhood?	1									
1 Very unsatisfactory - No dedicated space for Professional Learning Center 2 Unsatisfactory - Too small, poor condition, disconnected 3 Average - Adequate size, adequate condition, needs some renovations or updates to function well 4 Satisfactory - Good size, good condition, connected 5 Very Satisfactory - Generous size, excellent condition, connected N/A Does not apply									Comments	1.00	1.00
8.8	Is there a dedicated science room and support space?					5					
1 No 5 Yes									Monitoring answer, but doesn't affect overall score.		
8.9	Are there adequate places to display the evidence and artifacts of learning (both 2D and 3D)?				4						
1 Very unsatisfactory - No dedicated space 2 Unsatisfactory - Too small, non-dedicated, poor condition 3 Average - Adequate size, adequate condition, needs updates or renovations to function well 4 Satisfactory - Good size, good condition 5 Very Satisfactory - Generous size, excellent condition N/A Does not apply									Comments	1.00	4.00

8 - Academics & Learning (cont.)		1	2	3	4	5	N/A			
8.10	Does the building provide adequate opportunities for students/teachers to collaborate in varying group sizes?	1						Comments	1.00 1.00	
1	Very unsatisfactory - No space to support collaboration in various sizes.							The campus does not have any collaboration spaces or rooms for small groups.		
2	Unsatisfactory - Too small, inflexible, only one option, does not support a variety of group sizes									
3	Average - Adequate space for collaboration, needs updates or renovations to function well.									
4	Satisfactory - Good size, good condition, multiple options to support a variety of group sizes									
5	Very Satisfactory - Generous size, excellent condition, multiple options to support a variety of group sizes									
N/A	Does not apply									
8.11	Does the building provide opportunities for informal interaction?	1						Comments	1.00 1.00	
1	Very unsatisfactory - No space									
2	Unsatisfactory - Too small, poor condition, layout and furnishings do not support informal interaction well									
3	Average - Adequate size and condition, needs updates or renovations to function well.									
4	Satisfactory - Good size, good condition, layout and furnishings support informal interactions									
5	Very Satisfactory - Generous size, excellent condition, layout and furnishings support informal interactions									
N/A	Does not apply									
8.12	Does the learning neighborhood / building provide adequate opportunities for students to work independently?	1						Comments	1.00 1.00	
1	Very unsatisfactory - No breakout rooms/small study spaces									
2	Unsatisfactory - Too small, poor condition, no acoustic privacy, only one space for independent work, disconnected from learning neighborhood									
3	Average - Adequate size and condition, needs updates or renovations to function well.									
4	Satisfactory - Good size and condition, acoustic privacy, variety of independent work space options, connected to learning neighborhood									
5	Very Satisfactory - Generous size, excellent condition, acoustic privacy, variety of independent work space options, connected to learning neighborhood									
N/A	Does not apply									

8 - Academics & Learning (cont.)												
8.13	Are Special Education spaces appropriately configured per the ed spec?	1								Comments	1.00	1.00
1	Very unsatisfactory - Too small, no flexibility, disconnected									No access to natural light. Typical classroom layout.		
2	Unsatisfactory - Too small, only one area for all teaching methods, limited flexibility, disconnected											
3	Neutral - Adequate size, multiple areas for different teaching methods, adequate flexibility, limited transparency and connection to other studios and shared learning spaces, needs updates or renovations to function well.											
4	Satisfactory - Good size, multiple areas for different teaching methods, good flexibility, good transparency and connection to other studios and shared learning spaces											
5	Very Satisfactory - Generous size, multiple areas for different teaching methods, excellent flexibility, generous display area and visual teaching tools, excellent transparency and connection with other studios and shared learning spaces											
N/A	Does not apply											
8.14	Are Special Education support spaces, such as storage, space for washer/dryer, appropriately configured per the ed spec?	1								Comments	1.00	1.00
1	Very unsatisfactory - None provided									No washer or dryer.		
2	Unsatisfactory - Too small, disconnected, poor condition											
3	Neutral - Adequate size, average condition, needs updates or renovations to function well											
4	Satisfactory - Good size, connected, good condition											
5	Very Satisfactory - Generous size, connected, excellent condition											
N/A	Does not apply											
8.15	Are Accessible restrooms and changing rooms readily available to the Special Education spaces?					5				Comments	1.00	5.00
1	No											
5	Yes											

9 - Visual and Performing Arts		1	2	3	4	5	N/A	15.00	60%	
9.1	Are music spaces and the cafeteria stage appropriately configured per the ed spec?				4			Comments	1.00 4.00	
	1 Very unsatisfactory - Too small, missing program spaces							Music and cafeteria are not per ed spec. Campus has a dedicated auditorium for performances, but not near music room.		
	2 Unsatisfactory - Too small, poor condition									
	3 Neutral - Adequate size, adequate condition, needs updates or renovations to function well.									
	4 Satisfactory - Good size, good condition									
	5 Very Satisfactory - Generous size, excellent condition									
	N/A Does not apply									
9.2	Are music and performance storage spaces appropriately configured per the ed spec?		2					Comments	1.00 2.00	
	1 Very unsatisfactory - None provided							Disconnected from music and performance auditorium.		
	2 Unsatisfactory - Too small, disconnected, poor condition									
	3 Neutral - Adequate size, average condition, needs updates or renovations to function well									
	4 Satisfactory - Good size, connected, good condition									
	5 Very Satisfactory - Generous size, connected, excellent condition									
	N/A Does not apply									
9.3	Are Visual Arts spaces and storage appropriately configured per the ed spec?			3				Comments	1.00 3.00	
	1 Very unsatisfactory - Too small, missing program spaces									
	2 Unsatisfactory - Too small, poor condition									
	3 Average - Adequate size, adequate condition, needs some renovations or updates to function well									
	4 Satisfactory - Good size, good condition									
	5 Very Satisfactory - Generous size, excellent condition									
	N/A Does not apply									

10 - PE and Wellness		1	2	3	4	5	N/A	10.00	40%
10.1	Does the campus meet the ed spec standard for physical education program spaces?		2					Comments	1.00 2.00
	1 Very unsatisfactory - Too small, missing program spaces 2 Unsatisfactory - Too small, poor condition 3 Average - Adequate size, adequate condition, needs some renovations or updates to function well 4 Satisfactory - Good size, good condition 5 Very Satisfactory - Generous size, excellent condition N/A Does not apply	Gym is dated with old equipment and low ceilings. Gym is only 2,500 SF.							
10.2	Are the physical education storage spaces appropriately configured per the ed spec?		2					Comments	1.00 2.00
	1 Very unsatisfactory - None provided 2 Unsatisfactory - Too small, disconnected, poor condition 3 Neutral - Adequate size, average condition, needs updates or renovations to function well 4 Satisfactory - Good size, connected, good condition 5 Very Satisfactory - Generous size, connected, excellent condition N/A Does not apply	Storage provided, but designated gym storage room shares space with mechanical and electrical equipment. Plans show two storage rooms, but wall was removed and it is all one space now.							
11 - Food Services		1	2	3	4	5	N/A	10.00	40%
11.1	Is the Dining Commons appropriately configured per the ed spec?		2					Comments	1.00 2.00
	1 Very unsatisfactory - Too small, missing program spaces 2 Unsatisfactory - Too small, poor condition, only one option for eating space provided, inadequate circulation 3 Average - Adequate size and condition, needs updates or renovations to function well 4 Satisfactory - Good size and condition, good circulation, multiple options for eating space (ex: connection to outdoor eating space) 5 Very Satisfactory - Generous size, excellent condition and circulation, multiple options for eating space (ex: connection to outdoor eating space) N/A Does not apply	The cafeteria is very small with columns located within the main space.							
11.2	Are the Food Services support spaces appropriately configured per the ed spec?		2					Comments	1.00 2.00
	1 Very unsatisfactory - None provided 2 Unsatisfactory - Too small, disconnected, poor condition 3 Neutral - Adequate size, average condition, needs updates or renovations to function well 4 Satisfactory - Good size, connected, good condition 5 Very Satisfactory - Generous size, connected, excellent condition N/A Does not apply	No kitchen office							

12 - Media Resources		1	2	3	4	5	N/A	30.00	57%
12.1	Is the Library/Media Center easily accessible for the occupants and visitors to the school?			3				Comments	1.00 3.00
	1 Very unsatisfactory - Not accessible							Library can be accessed to visitors for evening functions but lacks signage to locate.	
	2 Unsatisfactory - Limited access, difficult to find, no transparency								
	3 Average - Adequate accessibility, needs updates or renovations to function well								
	4 Satisfactory - Accessible, easy to find, good transparency, good condition								
	5 Very Satisfactory - Accessible, easy to find, excellent transparency, excellent condition								
	N/A Does not apply								
12.2	How well does the Library/Media Center support quiet study?	1						Comments	1.00 1.00
	1 Very unsatisfactory - No quiet study spaces							the library lacks spaces for quiet study	
	2 Unsatisfactory - One area in poor condition, poor acoustic privacy								
	3 Average - One or more areas provided, needing updates or renovations to function well								
	4 Satisfactory - Clusters or small rooms adjacent to media center, good condition, good acoustic privacy								
	5 Very Satisfactory - Multiple clusters or small rooms adjacent to media center, excellent condition, excellent acoustic privacy								
	N/A Does not apply								
12.3	How well does the Library/Media Center support social interaction?			3				Comments	1.00 3.00
	1 Very unsatisfactory - No space							no areas with furniture to encourage social interaction.	
	2 Unsatisfactory - Too small, poor condition, layout and furnishings do not support informal interaction well								
	3 Average - Adequate size and condition, needs updates or renovations to function well.								
	4 Satisfactory - Good size, good condition, layout and furnishings support informal interactions								
	5 Very Satisfactory - Generous size, excellent condition, layout and furnishings support informal interactions								
	N/A Does not apply								
12.4	How well does the Library/Media Center support collaborative work in small groups (4-8 students)?			3				Comments	1.00 3.00
	1 Very unsatisfactory - No breakout rooms, no flexible furniture, no support							No breakout rooms but has areas with different furniture.	
	2 Unsatisfactory - Too small, one area, poor condition								
	3 Average - Adequate size, multiple areas provided, needing updates or renovations to function well								
	4 Satisfactory - Clusters or small rooms adjacent to media center, flexible furniture, good condition								
	5 Very Satisfactory - Multiple clusters or small rooms adjacent to media center, flexible furniture, excellent condition								
	N/A Does not apply								

12 - Media Resources - Continued		1	2	3	4	5	N/A			
12.5	How well does the Library/Media Center support collaborative work in larger groups (10-25)?			3				Comments	1.00 3.00	
1	Very unsatisfactory - No gathering areas									
2	Unsatisfactory - Too small, one common space, limited seating, poor condition									
3	Average - Adequate size, one common space, needs updates or renovations to function well									
4	Satisfactory - Good size, multiple common spaces with seating, good condition									
5	Very Satisfactory - Generous size, multiple commons spaces with seating, excellent condition									
N/A	Does not apply									
12.6	How well does the Library/Media Center support technology?				4			Comments	1.00 4.00	
1	Very unsatisfactory - No vis comm tools									
2	Unsatisfactory - Outdated, poorly functioning, or insufficient									
3	Good - Mix of old and new whiteboards/projectors/etc.									
4	Satisfactory - Projectors, marker boards, smart boards in most spaces - good condition									
5	Very Satisfactory - Projectors, marker boards, smart boards in most spaces - new condition									
N/A	Does not apply									
13 - Technology		1	2	3	4	5	N/A		20.00 35%	
13.1	How well equipped are the facilities with instructional technology?			3				Comments	1.00 3.00	
1	Very unsatisfactory - Limited to no technology present in instructional spaces									
2	Unsatisfactory - One type of technology present									
3	Average - Multiple types of technology, smart boards, poor condition, limited to only certain areas of school									
4	Satisfactory - Multiple types of technology, smart boards, good condition.									
5	Very Satisfactory - Multiple types of technology, smart boards, excellent condition									
N/A	Does not apply									
13.2	Is there an adequate number of power and data outlets in learning spaces?		2					Comments	1.00 2.00	
1	Very unsatisfactory - Outlet configuration does not support digital devices throughout school (1 per wall)								Due to the age of the main building, there is a lack of power and data outlets in the learning spaces.	
2	Unsatisfactory - Outlet configuration support digital devices only in certain areas of school (2 per wall)									
3	Average - Outlet configuration support digital devices but not enough capacity throughout school (3 per wall)									
4	Satisfactory - Outlet configuration support digital devices with adequate coverage and capacity throughout school (>3 per wall)									
5	Very Satisfactory - Excellent outlet configuration to support digital devices throughout school (>3 per wall)									
N/A	Does not apply									

13 - Technology (cont.)		1	2	3	4	5	N/A	Comments		1.00	1.00	
13.3	Are there adequate charging locations for devices?	1						Comments		1.00	1.00	
1	Very unsatisfactory - No centralized charging location							The studios do not have centralized charging locations and use extension cords throughout the campus.				
2	Unsatisfactory - Centralized charging location, but inadequate in size for number of devices											
3	Average - Charging cart or tower but not adequately sized for number of devices											
4	Satisfactory - Charging cart or tower not centralized											
5	Very Satisfactory - Charging cart or tower located centralized location. Excellent condition											
N/A	Does not apply											
13.4	Is there adequate AV for presentations spaces – cafeteria and gym?	1						Comments		1.00	1.00	
1	Very unsatisfactory - AV not present in one or more space											
2	Unsatisfactory - AV undersized for room, poor condition											
3	Average - Adequately sized / poor condition OR AV undersized / adequate condition											
4	Satisfactory - Good size, good condition											
5	Very Satisfactory - Generous sized, excellent condition											
N/A	Does not apply											
13.5	Is there digital media signage at the reception area?			3				Comments		0.00	0.00	
1	Very unsatisfactory - No digital media present in reception area											
2	Unsatisfactory - Undersized, poor condition											
3	Average - Adequately sized / poor condition OR undersized / adequate condition											
4	Satisfactory - Media signage present, good sized, good condition											
5	Very Satisfactory - Generously sized, excellent condition											
N/A	Does not apply											

14 - Administration Spaces		1	2	3	4	5	N/A	20.00	35%
14.1	Is there a reception area that functions as a security checkpoint for all visitors?							1.00	
	1 Very unsatisfactory - No security checkpoint 2 Unsatisfactory - Checkpoint is too small, poor condition 3 Average - Needs updates or renovations to function well 4 Satisfactory - Good size, good condition 5 Very Satisfactory - Generous size, excellent condition N/A Does not apply							Comments	
14.2	Does the administration area feel welcoming?		2					1.00	2.00
	1 Very unsatisfactory - No welcome space 2 Unsatisfactory - Too small, poor lighting and transparency, limited informal seating, poor condition 3 Average - Adequate size and layout, needs updates or renovations to feel welcoming 4 Satisfactory - Good size and layout, good lighting and transparency, informal seating provided 5 Very Satisfactory - Generous size and layout, plenty of light and transparency, informal seating provided, excellent condition N/A Does not apply							Comments	The checkpoint at the reception area is small and not in good condition and does not feel very welcoming with minimal furniture.
14.3	For those spaces that require it, does the administration area have adequate acoustic privacy?	1						1.00	1.00
	1 Very unsatisfactory - No acoustic separations 2 Unsatisfactory - Acoustic separations do not perform well 3 Average - Some acoustic separations function okay, but portions need updates or renovations 4 Satisfactory - Good acoustic separations 5 Very Satisfactory - Excellent acoustic separations N/A Does not apply							Comments	Acoustics among the spaces in the administration are not good and conversations can easily be heard between the office spaces.
14.4	Are conference rooms easily accessed for public / parent use?		2					1.00	2.00
	1 Very unsatisfactory - Not accessible for public/parent use 2 Unsatisfactory - Limited access, no transparency, poor condition, difficult to find 3 Average - Adequate accessibility, needs updates or renovations to function well 4 Satisfactory - Good accessibility, good transparency, good size and condition 5 Very Satisfactory - Excellent accessibility, excellent transparency, generous size, excellent condition N/A Does not apply							Comments	