

## **Educational Suitability Summary Report**

Casis Elementary School

Date: 12/17/2020

**Score 98% Very Satisfactory**

Casis Elementary School, serving an enrollment of approximately 570 students ranging from kindergarten through fifth grade, is in west central Austin. The original campus was built 1951 as a joint enterprise between AISD and the University of Texas. The school is known for its outdoor learning opportunities associated with the Outdoor Learning Center, located within the Casis Garden, and Casis Forest, which hosts walking trails and outdoor studios. The school also provides a Spanish program, which ensures that all students are introduced to the Spanish language and Spanish-speaking cultures.

As part of the 2017 bond program, the Casis campus will be completely rebuilt with phased openings and is scheduled to be fully complete in July 2022. Once completed, the building will be approximately 94,700 square feet. Based on a review of the construction documents, the new campus appears to adequately comply with the AISD Education Specifications. The studio sizes are slightly undersized; however, storage, flexible furniture, connectivity, and collaboration spaces all capture the requirements of the Ed Spec. There is a secure entry vestibule adjacent to the administration suite and the community-use spaces can be accessed after-hours for events.

### **Interview Overview**

An interview with Principal Tinnon was conducted to discuss points of concern with the existing campus and the design for the new school under construction. Some elements that were highlighted as important to the culture of Casis were the Cougar Pride Tree, Casis Garden and Learning Center, and Casis Forest. These elements are expected to be preserved in the construction of the new campus.

Many concerns for space and facilities appear to be addressed in the new building design. For example, the existing campus lacks a dedicated maker space and special education studio. Both have been factored into the new design. Principal Tinnon voiced a desire for a dedicated math and language studio, which did not make it into the new school design.

In general, Principal Tinnon is very pleased with the design of the new school. The exterior renderings are attractive and generate a lot of school pride. The maker space and art studio have doors that open to the exterior, allowing for activities to overflow into an internal courtyard. Studios have operable partitions and large sections of corridor glazing, which will allow for more flexible and independent study.

While the school cannot be fully evaluated against the AISD Education Specifications until construction is complete, based on review of the construction drawings there is a reasonable assumption that the new Casis Elementary campus will achieve a very satisfactory score.

### **Assessment Findings**

The Educational Suitability Assessment of Casis Elementary School earned a 98% overall score and places the campus in a category of Very Satisfactory. The assessment consists of seven General Building categories and seven Academic categories to determine areas that need more attention.

**Very Satisfactory Categories (80-100%):****Exterior**

Score is very satisfactory.

Based on review of construction drawings, the bus, parent and pedestrian drop-offs have separation. It is likely that building signage will be appropriate and helpful with wayfinding. A designated area for trash dumpsters is near the kitchen.

**Academics & Learning**

Score is very satisfactory.

Studios are 800 square feet and slightly undersized per Ed Spec, but storage, connectivity, transparency all meet the Ed Spec requirements. Bathrooms are a good size and meet accessibility requirements. Based on review of the drawings, there appears to be good visibility into the corridors and several operable partitions that will allow for flexibility within the studios. There are several small group rooms and collaboration spaces.

**Visual and Performing Arts**

Score is very satisfactory.

The stage and cafeteria space are a generous size and meet Ed Spec. The music and visual arts spaces meet Ed Spec.

**Media Resources**

Score is very satisfactory.

The media resource center is an adequate size and will work well for day and nighttime functions. Though difficult to derive from drawings, this space will likely have new and functional technology.

**Technology**

Score is very satisfactory.

Though difficult to derive from drawings, the campus will likely have new and functional technology as well as power/data locations as required per the Ed Spec.

**Outdoor Learning and Activity**

Score is very satisfactory.

This is difficult to evaluate based on drawings, but outdoor learning environments are likely based on landscape drawings and previous campus initiatives. Maker spaces and corridors have double doors that will open to exterior.

**Security**

Score is very satisfactory.



**Educational Suitability Summary Report**

Casis Elementary School

Perkins&amp;Will

**General Building**

Score is very satisfactory.

The renderings of the future building are attractive and convey school pride. Planned corridors appear to be 8 feet wide, which is average size. Community access to rooms and portions of the building after-hours is well-planned.

**Furniture Fixtures & Equipment**

Score is very satisfactory.

This is difficult to determine without furniture plans, but it is likely that the new furniture will meet or exceed Ed Spec requirements.

**Environmental Quality**

Score is very satisfactory.

Windows into studios appear to be a good size. Artificial lighting and sound transmission are assumed to meet Ed Spec.

**Controllability of Systems**

Score is very satisfactory.

It appears that each studio will have individual control over temperature and multiple levels of lighting control.

**PE and Wellness**

Score is very satisfactory.

PE spaces and connectivity to outdoors appear to be designed within the Ed Spec.

**Food Services**

Score is very satisfactory.

The cafeteria and kitchen spaces appear to be designed within the Ed Spec.

**Administration Spaces**

Score is very satisfactory.

The administration suite has visibility and adjacency into the secure vestibule. There are conference spaces available for parent and visitor use.

**Supporting Photographs**



*Rendering of building entry.*

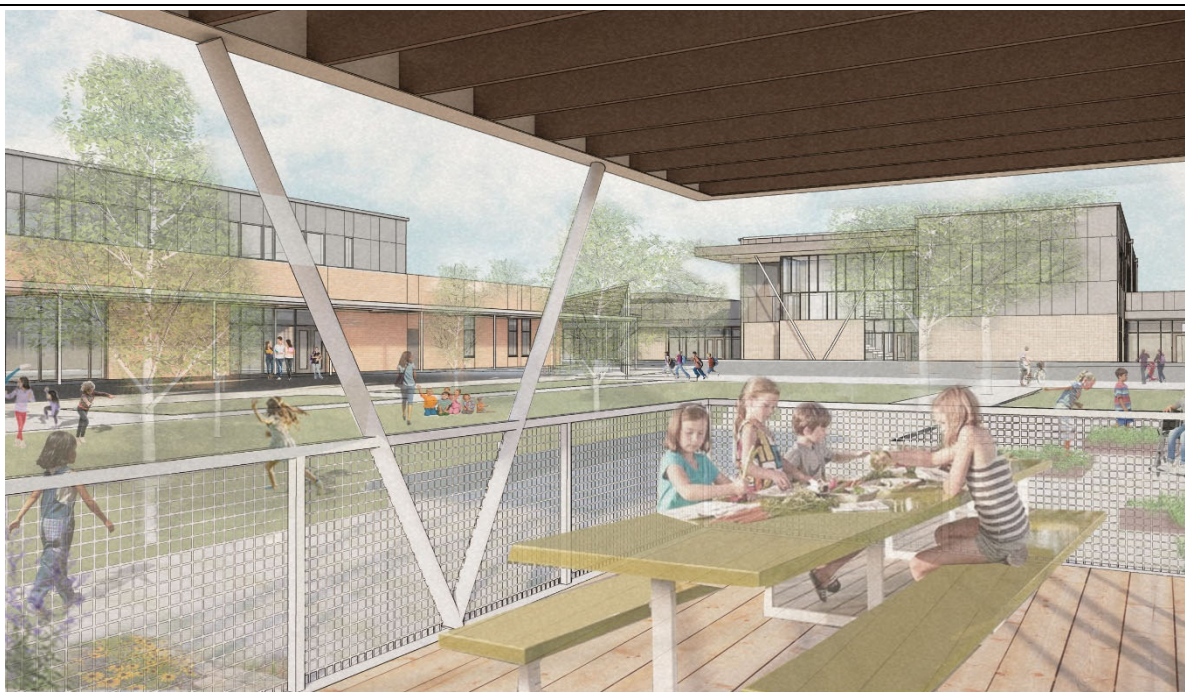


*Rendering of school from Exposition Boulevard.*

**Supporting Photographs**



*Rendering of secured outdoor courtyard space.*



*Rendering of outdoor dining area.*

**Supporting Photographs**



*Rendering of typical learning neighborhood with collaboration space and transparency into studios.*



*Rendering of typical studio that has transparency into corridor, excellent daylight / views, and flexible furniture.*

**Supporting Photographs**



*Media Center has flexible furniture and spaces for varying group sizes to meet.*



### Austin ISD Educational Suitability Assessment Criteria

#### General Building

School Name

Walk Attendees:

Date:

Casis ES (Desktop Assessment)

Lane Green & Kevin Kinsey

12.17.20

1 - Exterior		1	2	3	4	5	N/A	8.75	100%	
1.1	Does the site permit desirable separation of vehicular, bus and pedestrian traffic?					5		Comments	1.00	5.00
	1 Very unsatisfactory - Bus, car and pedestrian all happen at the same location							There appears to be a bus drop-off at the building entry with vehicular drop-off along the north side of the campus.		
	2 Unsatisfactory - Cars and buses mix, pedestrians are separated									
	3 Average - Buses, cars, and pedestrians are separate but stack space is small									
	4 Satisfactory - Buses, cars, and pedestrians are separate but drop off does not have a canopy or a holding place like a commons or cafeteria									
	5 Very satisfactory - Buses, cars, and pedestrians are separate and drop off area has a canopy and destination									
	N/A Does not apply									
1.2	Is the building easily identified with appropriate signage and community wayfinding?					5		Comments	0.25	1.25
	1 Very unsatisfactory - Campus has no signage / wayfinding							This is likely but difficult to determine through drawings.		
	2 Unsatisfactory - Signage/wayfinding is faded/hidden									
	3 Average - Signage / wayfinding visible but not apparent									
	4 Satisfactory - Signage / wayfinding is visible but not good condition									
	5 Very satisfactory - Signage and wayfinding is visible and easy to use									
	N/A Does not apply									



1 - Exterior (cont.)		1	2	3	4	5	N/A				
1.3	Is the dumpster accessible for trash / compost disposal?					5		Comments	0.50	2.50	
1	Very unsatisfactory - No compost present, route has obstacles (stairs, curbs, barriers) to dumpster								Likely yes; area near kitchen shown with 3 dumpsters.		
2	Unsatisfactory - Compost is present. Route has obstacles to dumpster										
3	Average - Compost is present (<100' to cafeteria), Route to dumpster is free and clear but the two are not directly adjacent.										
4	Satisfactory - Compost and dumpster are directly adjacent and route is barrier free										
5	Very Satisfactory - Compost and dumpster are directly adjacent and route is barrier free. Dumpster are shaped / positioned so people of all heights can access it.										
N/A	Does not apply										
2 - Outdoor Learning and Activity		1	2	3	4	5	N/A	15.00		100%	
2.1	Are outdoor studios and support spaces appropriately configured per the ed spec?					5		Comments	1.00	5.00	
1	Very unsatisfactory - No dedicated outdoor studios								Likely yes, but is difficult to determine through landscape drawings provided.		
2	Unsatisfactory - Too small, poor condition, disconnected from learning spaces, no flexibility, no shade provided										
3	Average - Adequate size, adequate condition, needs some renovations or updates to function well, 50% or less shade coverage over studio area										
4	Satisfactory - Good size, good condition, connected to learning spaces, good flexibility, more than 50% shade coverage over studio area										
5	Very satisfactory - Generous size, excellent condition, connected to learning spaces, excellent flexibility, full shade coverage over studio area										
N/A	Does not apply										
2.2	Are active playgrounds (elementary only) and support spaces configured per the ed spec?					5		Comments	1.00	5.00	
1	Very unsatisfactory - No dedicated active playground								Likely yes, but is difficult to determine through landscape drawings provided.		
2	Unsatisfactory - Too small, poor condition, no shade provided										
3	Average - Adequate size, adequate condition, needs some renovations or updates to function well, 50% or less shade coverage over play structure										
4	Satisfactory - Good size, good condition, more than 50% shade coverage over play structure										
5	Very satisfactory - Generous size, excellent condition, full shade coverage over play structure										
N/A	Does not apply										

2 - Outdoor Learning and Activity (cont)		1	2	3	4	5	N/A		
2.3	Are gardens and support spaces appropriately configured per the ed spec? (evaluation on infrastructure not condition of plants)					5		Comments	0.00 <b>0.00</b>
1	Very unsatisfactory - No dedicated gardens							Recording answer, does not affect the score for Outdoor Learning and Activity.  Likely yes, but is difficult to determine through landscape drawings provided.	
2	Unsatisfactory - Too small, poor condition, disconnected from learning spaces, no flexibility, no accessible water source								
3	Average - Adequate size, adequate condition, needs some renovations or updates to function well, water source is difficult to access								
4	Satisfactory - Good size, good condition, connected to learning spaces, good flexibility, water source is accessible with 100 ft hose								
5	Very Satisfactory - Generous size, excellent condition, connected to learning spaces, excellent flexibility, water source is less than 50ft from the garden or has irrigation								
N/A	Does not apply								
2.4	Are the rain gardens and/or cisterns appropriately configured per the ed spec?					5		Comments	0.00 <b>0.00</b>
1	Very unsatisfactory - No rain gardens or cisterns							Recording answer, does not affect the score for Outdoor Learning and Activity.  Cisterns are shown on landscape drawings.	
2	Unsatisfactory - Too small, poor condition, not functioning, disconnected								
3	Average - Adequate size, adequate condition, is connected, needs some renovations or updates to function well								
4	Satisfactory - Good size, good condition, functions properly								
5	Very Satisfactory - Generous size, excellent condition, exceptional functionality, connected to learning spaces, educational signage provided								
N/A	Does not apply								
2.5	Does the school have animal husbandry? (optional)	1						Comments	0.00 <b>0.00</b>
1	No								
5	Yes								
2.6	Does the school have nature loop trails? (optional)					5		Comments	0.00 <b>0.00</b>
1	No								
5	Yes								
2.7	Does the school have a learning pond? (optional)	1						Comments	0.00 <b>0.00</b>
1	No								
5	Yes								
2.8	Does the school have a grass play field and walking trail?					5		Comments	1.00 <b>5.00</b>
1	No								
5	Yes								

3 - General Building		1	2	3	4	5	N/A	11.25	96%	
3.1	Are interior circulation routes wide enough to safely and effectively accommodate student movement?				4			Comments	0.50	2.00
1	Very unsatisfactory - Primary circulation is 5'-0" to 6'-0" wide									
2	Unsatisfactory - Primary circulation is 6'-0" to 7'-0" wide									
3	Average - Primary circulation is 7'-0" to 8'-0" wide									
4	Satisfactory - Primary circulation is 8'-0"-10'-0" wide									
5	Very satisfactory - Primary circulation is 10'-0"+ wide									
N/A	Does not apply									
3.2	Are community use areas arranged so that the school can allow night functions without full school access?					5		Comments	0.75	3.75
1	Very unsatisfactory - Cafeteria, gym, and library cannot be accessed after hours	Yes, community use areas are arranged for night function access.								
2	Unsatisfactory - Only one of the public spaces (Cafeteria, Gym and Library) can be accessed from parking and secured after hours									
3	Average - Only two of the public spaces can be accessed from parking and secured after hours									
4	Satisfactory - All of the public spaces can be accessed from parking and secured from the rest of the building but not individually									
5	Very satisfactory - Cafeteria, gym, and library can be accessed from parking and locked off from rest of campus for night/evening use with their own entrance									
N/A	Does not apply									
3.3	Is there a community room that is a dedicated meeting space outside of school function?					5		Comments	0.75	3.75
1	Very unsatisfactory - No dedicated community room	Yes, near the main entry.								
2	Unsatisfactory - Community room but within school function, no access after school hours									
3	Average - Community room, moderate size, but need some renovations or updates to function well									
4	Satisfactory - Community room, good size /layout, meets needs /functions well									
5	Very Satisfactory - Community room, generous size, nice condition, functions appropriately outside of school function									
N/A	Does not apply									
3.4	Does the general appearance of the school convey pride for the students and community?					5		Comments	0.25	1.25
1	Very unsatisfactory - General appearance is poor	Yes, renderings of future school are attractive.								
2	Unsatisfactory - General appearance is aged but ok									
3	Average - General appearance is good									
4	Satisfactory - General appearance shows pride in campus and student works									
5	Very Unsatisfactory - General appearance shows pride in campus and student works and is welcoming to the community									
N/A	Does not apply									

4 - Security		1	2	3	4	5	N/A	16.25	
4.1	Does the facility have key card access at all major entries?							0.25	
1	Very unsatisfactory - No entries								
2	Unsatisfactory - 1/4 of major entries								
3	Average - 1/2 of major entries								
4	Satisfactory - 3/4 of major entries								
5	Very satisfactory - All of major entries								
N/A	Does not apply								
4.2	How adequate is site lighting and security for the campus overall?							1.00	
1	Very unsatisfactory - No exterior lighting, no secure perimeter								
2	Unsatisfactory - Lighting is limited to front entry only, parking lot lighting poor, security is minimal								
3	Average - Lighting at all night-use entries and parking lot, but poor condition. Security is moderate								
4	Satisfactory - Lighting at all night-use entries and parking lots, good condition, signage less visible, perimeter is well secured but needs updates								
5	Very satisfactory - Signage, parking lots, and entries are well lit, visible and easy to use, perimeter is very secure								
N/A	Does not apply								
4.3	Is the main office located at the school entry and configured with a secure vestibule to the main corridor?							1.00	
1	Very unsatisfactory - No secure vestibule, office located far from main entry, allows visitors access to school unsupervised								
2	Unsatisfactory - No secure vestibule, office located somewhat far from main entry, minimal supervision of visitors								
3	Average - Office close to entry, views of front door, but no secure vestibule								
4	Satisfactory - Office is well-located with a secure vestibule, but needs updates								
5	Very satisfactory - Office well-located with secure vestibule and all appropriate security features								
N/A	Does not apply								
4.4	Is there enough interior transparency for faculty to passively supervise learners and their activities who are not in studios?					5		1.00	5.00
1	Very unsatisfactory - No transparency of walls								
2	Unsatisfactory - Limited transparency in certain locations								
3	Average - Good transparency in certain locations but inadequate or missing in other locations of school								
4	Satisfactory - Adequate transparency throughout the school								
5	Very satisfactory - Excellent transparency throughout the school								
N/A	Does not apply								

Most studios have large interior glazing to observe activities in the hallways.

5 - Environmental Quality		1	2	3	4	5	N/A	25.00	100%
5.1	How are acoustics in studios in general?					5		Comments	1.00 5.00
1	Very unsatisfactory - Recognized word/sound from adjacent studio/corridor							This is likely.	
2	Unsatisfactory - Audible sound from adjacent studio/corridor								
3	Average - Slight sound from outside room								
4	Satisfactory - Walls to deck insulated only white noise from mechanical system								
5	Very satisfactory - Able to hear quiet speaking from across the room								
N/A	Does not apply								
5.2	Is the studio artificial lighting adequate quality?					5		Comments	1.00 5.00
1	Very unsatisfactory - Sporadic lights work, glare, less than 20 FC							This is likely.	
2	Unsatisfactory - 10-19 FC or serious glare								
3	Average- 20-29 FC minor glare								
4	Satisfactory - 30-39 FC and no glare								
5	Very satisfactory - 40+ FC and no glare								
N/A	Does not apply								
5.3	Is there access to natural light in studios?					5		Comments	1.00 5.00
1	Very unsatisfactory - No learning spaces have natural light							Windows appear to be generous in drawings.	
2	Unsatisfactory - 1-25% of learning spaces have natural light or windows are too small to let in light								
3	Average - 26-50% of learning spaces have natural light								
4	Satisfactory - 51-75% of learning spaces have natural light								
5	Very satisfactory - 76-100% of learning spaces have natural light								
N/A	Does not apply								
5.4	Is there access to outside views from learning spaces?					5		Comments	1.00 5.00
1	Very unsatisfactory - No learning spaces have views							This is likely given the window sizes and locations.	
2	Unsatisfactory - 1-25% of learning spaces have views or windows are too small to see out								
3	Average - 26-50% of learning spaces have views								
4	Satisfactory - 51-75% of learning spaces have views								
5	Very satisfactory - 76-100% of learning spaces have views								
N/A	Does not apply								

<b>5 - Environmental Quality (cont.)</b>		1	2	3	4	5	N/A			
5.5	Does the building have odor or pest problems?					5		Comments	1.00	<b>5.00</b>
1	Very unsatisfactory - Evidence of both pests and odors									
2	Unsatisfactory - Evidence of pests or odors									
3	Average - Limited evidence of pests, no odors									
4	Satisfactory - No evidence of pests / odors, school cleanliness in good condition									
5	Very Satisfactory - No evidence, school cleanliness in excellent condition									
N/A	Does not apply									
<b>6 - Controllability of Systems</b>		1	2	3	4	5	N/A		12.50	<b>100%</b>
6.1	Does the studio thermostat allow for individual control?					5		Comments	0.50	<b>2.50</b>
1	No									
5	Yes									
6.2	Are shades provided to control natural light in learning spaces?					5		Comments	1.00	<b>5.00</b>
1	Very unsatisfactory - No, windows are covered with boards/paper	This is likely, but difficult to determine without furnishings.								
2	Unsatisfactory - No, windows have no light control									
3	Average - Yes, but poor condition blinds									
4	Satisfactory - Yes, blinds									
5	Very satisfactory - Blackout shades									
N/A	Does not apply									
6.3	What is the quality of lighting controls in the studios?					5		Comments	1.00	<b>5.00</b>
1	Very unsatisfactory - Single switch only per room									
2	Unsatisfactory - Alternating rows switch off									
3	Average - Alternating lamps in single fixtures switch off									
4	Satisfactory - Tri level switching									
5	Very satisfactory - Dimmable									
N/A	Does not apply									

7 - Furniture, Fixtures & Equipment		1	2	3	4	5	N/A	18.75	100%	
7.1	What is the current condition of the furniture?					5		Comments	0.75 <b>3.75</b>	
1	Very unsatisfactory - Damaged or broken, non-functioning							Furniture will be new.		
2	Unsatisfactory - Torn/ bent/ wrong size									
3	Average - Scratched/dented/marked									
4	Satisfactory - Not new, but sturdy and clean									
5	Very satisfactory - New									
N/A	Does not apply									
7.2	Are a variety of furniture types being accommodated throughout the school - learning commons, dining commons, other multi-use spaces?					5		Comments	1.00 <b>5.00</b>	
1	Very Unsatisfactory - Same furniture used in all spaces							This is likely but difficult to determine without furnishings.		
2	Unsatisfactory - Furniture variety in one multi-use space									
3	Average - Furniture variety in more than one multi-use space									
4	Satisfactory - All multi-use spaces have greater than one type of furniture									
5	Very satisfactory - All multi-use spaces have greater than two types of furniture									
N/A	Does not apply									
7.3	How well does furniture accommodate rapid reconfiguration of a space?					5		Comments	1.00 <b>5.00</b>	
1	Very Unsatisfactory - Furniture is fixed or very heavy							This is likely but difficult to determine without furnishings.		
2	Unsatisfactory - Furniture does not allow desks to be configured as individuals, small groups, or large groups									
3	Average - Mix of furniture that can reconfigure but is cumbersome to move									
4	Satisfactory - Furniture is flexible for multiple configurations of space									
5	Very satisfactory - Furniture is flexible for multiple configurations of space, easy to move and stack									
N/A	Does not apply									
7.4	Is the furniture ergonomic and size appropriate for grade level?					5		Comments	1.00 <b>5.00</b>	
1	Very unsatisfactory - Desk with attached chair combinations too small for grade level							This is likely but difficult to determine without furnishings.		
2	Unsatisfactory - Desk with attached chair combinations									
3	Average - Mix of studios with tables/loose chairs and desks with fixed seats									
4	Very satisfactory - Tables with loose chairs									
5	Very satisfactory - Tables with loose chairs that allow students to be active									
N/A	Does not apply									

Zero Waste		1	2	3	4	5	N/A	5.00	100%	
Do studios and corridors have blue recycle bins with bilingual instructions and/or image sorting instructions?						5		Comments	0.50 <b>2.50</b>	
1	Very unsatisfactory - There are no recycling and landfill bins and signage are sparse or infrequent. OR there are only landfill bins with no recycling bins.							<p>A score for this category is being recorded, but this category is not calculated in the overall ESA average.</p> <p>This is likely but difficult to determine without furnishings.</p>		
2	Unsatisfactory - Bins and signage are sparse or infrequent and/or lack clear signage.									
3	Average - 50% of corridors and studios have both a landfill bin and a recycle bin in an accessible location. The containers have clear signage.									
4	Satisfactory - 75% of studios and corridors have a visible landfill and recycle collection containers in an accessible location. The containers have clear signage.									
5	Very satisfactory - All studios / corridors (100%) have visible landfill and recycle collection containers in accessible locations. The containers have clear signage, and the style and format is consistent and uniform across campus.									
N/A	Does not apply									
Does the cafeteria (or wherever meals are served) have at least one of each: green compost bin, blue recycle bin, and landfill bin? Are the bins labelled clearly with bilingual and/or image sorting?						5		Comments	0.50 <b>2.50</b>	
1	Very unsatisfactory- There may be landfill bins, but there are no compost and/or recycle bins. There is not clear sorting signage.							<p>A score for this category is being recorded, but this category is not calculated in the overall ESA average.</p> <p>This is likely but difficult to determine without furnishings.</p>		
2	Unsatisfactory- Recycle, landfill, and compost bins are present, but the bins are scattered and no co-located next to one another. Signage is absent or inconsistent.									
3	Average- There is at least one waste station with all three bins (recycle, compost, landfill) located with close proximity to one another. The signage is visible and consistent.									
4	Satisfactory- There are several waste stations as described above									
5	Very Satisfactory - There are several waste stations as described above, and additional signage in the cafeteria that encourages recycling/composting.									
N/A	Does not apply									





### Austin ISD Educational Suitability Assessment Criteria

#### Academics - Elementary School

School Name

Walk Attendees:

Date:

Casis ES (Desktop Assessment)

Lane Green & Kevin Kinsey

12.17.20

8 - Academics & Learning		1	2	3	4	5	N/A	65.00	97%	
8.1	Are studios appropriately configured per the ed spec?				4			Comments	1.00 4.00	
1	Very unsatisfactory - Too small, no flexibility, disconnected	<p>General studios are 800 SF. Slightly undersized per Ed Spec but good connectivity to other studios through the use of movable partitions. Transparency is present from collaboration spaces into studios.</p>								
2	Unsatisfactory - Too small, only one area for all teaching methods, limited flexibility, disconnected									
3	Neutral - Adequate size, multiple areas for different teaching methods, adequate flexibility, limited transparency and connection to other studios and shared learning spaces, needs updates or renovations to function well.									
4	Satisfactory - Good size, multiple areas for different teaching methods, good flexibility, good transparency and connection to other studios and shared learning spaces									
5	Very Satisfactory - Generous size, multiple areas for different teaching methods, excellent flexibility, generous display area and visual teaching tools, excellent transparency and connection with other studios and shared learning spaces									
N/A	Does not apply									
8.2	Do Pre-K and Kinder have appropriate support spaces such as restrooms and storage per the ed spec?					5		Comments	1.00 5.00	
1	Very unsatisfactory - None provided	<p>Bathrooms are good size and accessibility.</p>								
2	Unsatisfactory - Too small, disconnected, poor condition									
3	Neutral - Adequate size, average condition, needs updates or renovations to function well									
4	Satisfactory - Good size, connected, good condition									
5	Very Satisfactory - Generous size, connected, excellent condition									
N/A	Does not apply									

8 - Academics & Learning (cont.)		1	2	3	4	5	N/A			
8.3	Do studios have appropriate support spaces such as storage per the ed spec?					5		Comments	1.00	5.00
	1 Very unsatisfactory - None provided 2 Unsatisfactory - Too small, disconnected, poor condition 3 Neutral - Adequate size, average condition, needs updates or renovations to function well 4 Satisfactory - Good size, connected, good condition 5 Very Satisfactory - Generous size, connected, excellent condition N/A Does not apply	Storage options within studios meets Ed Spec.								
8.4	Do typical learning neighborhoods have small group rooms and open collaboration space?					5		Comments	1.00	5.00
	1 Very unsatisfactory - No breakout rooms or open collaboration spaces are provided 2 Unsatisfactory - Too small or too few, poor condition, no flexibility, lacks visual connection to learning neighborhood, poor acoustic privacy 3 Average - Adequate size, adequate condition, needs some renovations or updates to function well 4 Satisfactory - Good size, good condition and flexibility, transparency and connection to learning neighborhood, acoustic privacy 5 Very Satisfactory - Generous size, excellent condition and flexibility, transparency and connection to learning neighborhood, acoustic privacy N/A Does not apply	Small group rooms and open collaboration space are provided.								
8.5	Are general studios large enough to support project-based learning and multiple teaching modalities?					5		Comments	1.00	5.00
	1 Very unsatisfactory - Too small, no flexibility, does not support project-based learning 2 Unsatisfactory - Undersized, decentralized resources, limited flexibility 3 Average - Adequate size, needs some renovations or updates to function well 4 Satisfactory - Good size, centralized resources, good flexibility 5 Very Satisfactory - Generous size, centralized project resources, excellent flexibility N/A Does not apply	Yes, this seems likely.								

8 - Academics & Learning (cont.)		1	2	3	4	5	N/A			
8.6	Are Maker Spaces and support spaces appropriately configured per the ed spec?				4			Comments	1.00 <b>4.00</b>	
1	Very unsatisfactory - No dedicated maker spaces							Good size and orientation but only adjacent to ground-floor studios.		
2	Unsatisfactory - Too small, poor condition, disconnected from learning spaces, no flexibility									
3	Average - Adequate size, adequate condition, needs some renovations or updates to function well									
4	Satisfactory - Good size, good condition, connected to learning spaces									
5	Very Satisfactory - Generous size, excellent condition, connected to learning spaces									
N/A	Does not apply									
8.7	Is there a Professional Learning Center in the learning neighborhood?					5		Comments	1.00 <b>5.00</b>	
1	Very unsatisfactory - No dedicated space for Professional Learning Center							Yes,		
2	Unsatisfactory - Too small, poor condition, disconnected									
3	Average - Adequate size, adequate condition, needs some renovations or updates to function well									
4	Satisfactory - Good size, good condition, connected									
5	Very Satisfactory - Generous size, excellent condition, connected									
N/A	Does not apply									
8.8	Is there a dedicated science room and support space?	1						Comments	0.00 <b>0.00</b>	
1	No							Monitoring answer, but doesn't affect overall score.		
5	Yes									
8.9	Are there adequate places to display the evidence and artifacts of learning (both 2D and 3D)?					5		Comments	1.00 <b>5.00</b>	
1	Very unsatisfactory - No dedicated space							The building provides an abundance of 2D display locations and some 3D displays adjacent to the maker spaces.		
2	Unsatisfactory - Too small, non-dedicated, poor condition									
3	Average - Adequate size, adequate condition, needs updates or renovations to function well									
4	Satisfactory - Good size, good condition									
5	Very Satisfactory - Generous size, excellent condition									
N/A	Does not apply									

8 - Academics & Learning (cont.)		1	2	3	4	5	N/A			
8.10	Does the building provide adequate opportunities for students/teachers to collaborate in varying group sizes?					5		Comments	1.00 <b>5.00</b>	
1	Very unsatisfactory - No space to support collaboration in various sizes.							Many studios have operable walls to allow for overflow into collaboration spaces. Maker spaces have partitions to allow for one large combined space. Dining and gym may also be combined into one large space if needed.		
2	Unsatisfactory - Too small, inflexible, only one option, does not support a variety of group sizes									
3	Average - Adequate space for collaboration, needs updates or renovations to function well.									
4	Satisfactory - Good size, good condition, multiple options to support a variety of group sizes									
5	Very Satisfactory - Generous size, excellent condition, multiple options to support a variety of group sizes									
N/A	Does not apply									
8.11	Does the building provide opportunities for informal interaction?						N/A	Comments	0.00 <b>0.00</b>	
1	Very unsatisfactory - No space							This is likely but without furniture plans, it is difficult to evaluate.		
2	Unsatisfactory - Too small, poor condition, layout and furnishings do not support informal interaction well									
3	Average - Adequate size and condition, needs updates or renovations to function well.									
4	Satisfactory - Good size, good condition, layout and furnishings support informal interactions									
5	Very Satisfactory - Generous size, excellent condition, layout and furnishings support informal interactions									
N/A	Does not apply									
8.12	Does the learning neighborhood / building provide adequate opportunities for students to work independently?					5		Comments	1.00 <b>5.00</b>	
1	Very unsatisfactory - No breakout rooms/small study spaces							Small group rooms are located within every learning neighborhood. These would provide excellent areas for independent study if needed.		
2	Unsatisfactory - Too small, poor condition, no acoustic privacy, only one space for independent work, disconnected from learning neighborhood									
3	Average - Adequate size and condition, needs updates or renovations to function well.									
4	Satisfactory - Good size and condition, acoustic privacy, variety of independent work space options, connected to learning neighborhood									
5	Very Satisfactory - Generous size, excellent condition, acoustic privacy, variety of independent work space options, connected to learning neighborhood									
N/A	Does not apply									

8 - Academics & Learning (cont.)											
8.13	Are Special Education spaces appropriately configured per the ed spec?					5		Comments	1.00	5.00	
1	Very unsatisfactory - Too small, no flexibility, disconnected						All Special Education spaces are accounted for per the Ed Spec.				
2	Unsatisfactory - Too small, only one area for all teaching methods, limited flexibility, disconnected										
3	Neutral - Adequate size, multiple areas for different teaching methods, adequate flexibility, limited transparency and connection to other studios and shared learning spaces, needs updates or renovations to function well.										
4	Satisfactory - Good size, multiple areas for different teaching methods, good flexibility, good transparency and connection to other studios and shared learning spaces										
5	Very Satisfactory - Generous size, multiple areas for different teaching methods, excellent flexibility, generous display area and visual teaching tools, excellent transparency and connection with other studios and shared learning spaces										
N/A	Does not apply										
8.14	Are Special Education support spaces, such as storage, space for washer/dryer, appropriately configured per the ed spec?					5		Comments	1.00	5.00	
1	Very unsatisfactory - None provided						Yes.				
2	Unsatisfactory - Too small, disconnected, poor condition										
3	Neutral - Adequate size, average condition, needs updates or renovations to function well										
4	Satisfactory - Good size, connected, good condition										
5	Very Satisfactory - Generous size, connected, excellent condition										
N/A	Does not apply										
8.15	Are Accessible restrooms and changing rooms readily available to the Special Education spaces?					5		Comments	1.00	5.00	
1	No										
5	Yes										

<b>9 - Visual and Performing Arts</b>		1	2	3	4	5	N/A	15.00	100%
9.1	Are music spaces and the cafeteria stage appropriately configured per the ed spec?					5		Comments	1.00 <b>5.00</b>
	1 Very unsatisfactory - Too small, missing program spaces							Combined, music rooms are of generous size and exceed Ed Spec. Cafeteria meets Ed Spec.	
	2 Unsatisfactory - Too small, poor condition								
	3 Neutral - Adequate size, adequate condition, needs updates or renovations to function well.								
	4 Satisfactory - Good size, good condition								
	5 Very Satisfactory - Generous size, excellent condition								
	N/A Does not apply								
9.2	Are music and performance storage spaces appropriately configured per the ed spec?					5		Comments	1.00 <b>5.00</b>
	1 Very unsatisfactory - None provided							Music storage rooms are generous size and exceed Ed Spec, which offsets the slightly small stage and chair storage closets.	
	2 Unsatisfactory - Too small, disconnected, poor condition								
	3 Neutral - Adequate size, average condition, needs updates or renovations to function well								
	4 Satisfactory - Good size, connected, good condition								
	5 Very Satisfactory - Generous size, connected, excellent condition								
	N/A Does not apply								
9.3	Are Visual Arts spaces and storage appropriately configured per the ed spec?					5		Comments	1.00 <b>5.00</b>
	1 Very unsatisfactory - Too small, missing program spaces							Combined, visual arts spaces are generous size and exceed Ed Spec.	
	2 Unsatisfactory - Too small, poor condition								
	3 Average - Adequate size, adequate condition, needs some renovations or updates to function well								
	4 Satisfactory - Good size, good condition								
	5 Very Satisfactory - Generous size, excellent condition								
	N/A Does not apply								

<b>10 - PE and Wellness</b>		1	2	3	4	5	N/A	10.00	90%
10.1	Does the campus meet the ed spec standard for physical education program spaces?					5		Comments	1.00 5.00
	1 Very unsatisfactory - Too small, missing program spaces							Yes.	
	2 Unsatisfactory - Too small, poor condition								
	3 Average - Adequate size, adequate condition, needs some renovations or updates to function well								
	4 Satisfactory - Good size, good condition								
	5 Very Satisfactory - Generous size, excellent condition								
	N/A Does not apply								
10.2	Are the physical education storage spaces appropriately configured per the ed spec?				4			Comments	1.00 4.00
	1 Very unsatisfactory - None provided							Outdoor storage appears to be missing.	
	2 Unsatisfactory - Too small, disconnected, poor condition								
	3 Neutral - Adequate size, average condition, needs updates or renovations to function well								
	4 Satisfactory - Good size, connected, good condition								
	5 Very Satisfactory - Generous size, connected, excellent condition								
	N/A Does not apply								
<b>11 - Food Services</b>		1	2	3	4	5	N/A	10.00	100%
11.1	Is the Dining Commons appropriately configured per the ed spec?					5		Comments	1.00 5.00
	1 Very unsatisfactory - Too small, missing program spaces							Yes.	
	2 Unsatisfactory - Too small, poor condition, only one option for eating space provided, inadequate circulation								
	3 Average - Adequate size and condition, needs updates or renovations to function well								
	4 Satisfactory - Good size and condition, good circulation, multiple options for eating space (ex: connection to outdoor eating space)								
	5 Very Satisfactory - Generous size, excellent condition and circulation, multiple options for eating space (ex: connection to outdoor eating space)								
	N/A Does not apply								
11.2	Are the Food Services support spaces appropriately configured per the ed spec?					5		Comments	1.00 5.00
	1 Very unsatisfactory - None provided								
	2 Unsatisfactory - Too small, disconnected, poor condition								
	3 Neutral - Adequate size, average condition, needs updates or renovations to function well								
	4 Satisfactory - Good size, connected, good condition								
	5 Very Satisfactory - Generous size, connected, excellent condition								
	N/A Does not apply								

12 - Media Resources		1	2	3	4	5	N/A	30.00	93%	
12.1	Is the Library/Media Center easily accessible for the occupants and visitors to the school?				4			Comments	1.00 4.00	
	1 Very unsatisfactory - Not accessible							Library/media is connected to studios by hallway, not immediately accessible to studios but has good availability to visitors.		
	2 Unsatisfactory - Limited access, difficult to find, no transparency									
	3 Average - Adequate accessibility, needs updates or renovations to function well									
	4 Satisfactory - Accessible, easy to find, good transparency, good condition									
	5 Very Satisfactory - Accessible, easy to find, excellent transparency, excellent condition									
	N/A Does not apply									
12.2	How well does the Library/Media Center support quiet study?				4			Comments	1.00 4.00	
	1 Very unsatisfactory - No quiet study spaces							A single, small quiet study room is available.		
	2 Unsatisfactory - One area in poor condition, poor acoustic privacy									
	3 Average - One or more areas provided, needing updates or renovations to function well									
	4 Satisfactory - Clusters or small rooms adjacent to media center, good condition, good acoustic privacy									
	5 Very Satisfactory - Multiple clusters or small rooms adjacent to media center, excellent condition, excellent acoustic privacy									
	N/A Does not apply									
12.3	How well does the Library/Media Center support social interaction?					5		Comments	1.00 5.00	
	1 Very unsatisfactory - No space							This is likely but difficult to evaluate without furniture.		
	2 Unsatisfactory - Too small, poor condition, layout and furnishings do not support informal interaction well									
	3 Average - Adequate size and condition, needs updates or renovations to function well.									
	4 Satisfactory - Good size, good condition, layout and furnishings support informal interactions									
	5 Very Satisfactory - Generous size, excellent condition, layout and furnishings support informal interactions									
	N/A Does not apply									
12.4	How well does the Library/Media Center support collaborative work in small groups (4-8 students)?					5		Comments	1.00 5.00	
	1 Very unsatisfactory - No breakout rooms, no flexible furniture, no support							This is likely but difficult to evaluate without furniture.		
	2 Unsatisfactory - Too small, one area, poor condition									
	3 Average - Adequate size, multiple areas provided, needing updates or renovations to function well									
	4 Satisfactory - Clusters or small rooms adjacent to media center, flexible furniture, good condition									
	5 Very Satisfactory - Multiple clusters or small rooms adjacent to media center, flexible furniture, excellent condition									
	N/A Does not apply									



12 - Media Resources - Continued		1	2	3	4	5	N/A			
12.5	How well does the Library/Media Center support collaborative work in larger groups (10-25)?					5		Comments	1.00	5.00
1	Very unsatisfactory - No gathering areas							This is likely but difficult to evaluate without furniture.		
2	Unsatisfactory - Too small, one common space, limited seating, poor condition									
3	Average - Adequate size, one common space, needs updates or renovations to function well									
4	Satisfactory - Good size, multiple common spaces with seating, good condition									
5	Very Satisfactory - Generous size, multiple commons spaces with seating, excellent condition									
N/A	Does not apply									
12.6	How well does the Library/Media Center support technology?					5		Comments	1.00	5.00
1	Very unsatisfactory - No vis comm tools						A/V connections are shown but it is difficult to evaluate without A/V drawings.			
2	Unsatisfactory - Outdated, poorly functioning, or insufficient									
3	Good - Mix of old and new whiteboards/projectors/etc.									
4	Satisfactory - Projectors, marker boards, smart boards in most spaces - good condition									
5	Very Satisfactory - Projectors, marker boards, smart boards in most spaces - new condition									
N/A	Does not apply									
13 - Technology		1	2	3	4	5	N/A	20.00		100%
13.1	How well equipped are the facilities with instructional technology?					5		Comments	1.00	5.00
1	Very unsatisfactory - Limited to no technology present in instructional spaces						This is likely but difficult to evaluate without equipment.			
2	Unsatisfactory - One type of technology present									
3	Average - Multiple types of technology, smart boards, poor condition, limited to only certain areas of school									
4	Satisfactory - Multiple types of technology, smart boards, good condition.									
5	Very Satisfactory - Multiple types of technology, smart boards, excellent condition									
N/A	Does not apply									
13.2	Is there an adequate number of power and data outlets in learning spaces?					5		Comments	1.00	5.00
1	Very unsatisfactory - Outlet configuration does not support digital devices throughout school (1 per wall)									
2	Unsatisfactory - Outlet configuration support digital devices only in certain areas of school (2 per wall)									
3	Average - Outlet configuration support digital devices but not enough capacity throughout school (3 per wall)									
4	Satisfactory - Outlet configuration support digital devices with adequate coverage and capacity throughout school (>3 per wall)									
5	Very Satisfactory - Excellent outlet configuration to support digital devices throughout school (>3 per wall)									
N/A	Does not apply									

13 - Technology (cont.)		1	2	3	4	5	N/A				
13.3	Are there adequate charging locations for devices?					5		Comments	1.00	5.00	
1	Very unsatisfactory - No centralized charging location							This is likely but difficult to evaluate without equipment.			
2	Unsatisfactory - Centralized charging location, but inadequate in size for number of devices										
3	Average - Charging cart or tower but not adequately sized for number of devices										
4	Satisfactory - Charging cart or tower not centralized										
5	Very Satisfactory - Charging cart or tower located centralized location. Excellent condition										
N/A	Does not apply										
13.4	Is there adequate AV for presentations spaces – cafeteria and gym?					5		Comments	1.00	5.00	
1	Very unsatisfactory - AV not present in one or more space							A/V connections are shown but difficult to evaluate without A/V drawings.			
2	Unsatisfactory - AV undersized for room, poor condition										
3	Average - Adequately sized / poor condition OR AV undersized / adequate condition										
4	Satisfactory - Good size, good condition										
5	Very Satisfactory - Generous sized, excellent condition										
N/A	Does not apply										
13.5	Is there digital media signage at the reception area?					5		Comments	0.00	0.00	
1	Very unsatisfactory - No digital media present in reception area							This is likely but difficult to evaluate without A/V drawings.			
2	Unsatisfactory - Undersized, poor condition										
3	Average - Adequately sized / poor condition OR undersized / adequate condition										
4	Satisfactory - Media signage present, good sized, good condition										
5	Very Satisfactory - Generously sized, excellent condition										
N/A	Does not apply										

14 - Administration Spaces		1	2	3	4	5	N/A	20.00	100%
14.1	Is there a reception area that functions as a security checkpoint for all visitors?							1.00	
1	Very unsatisfactory - No security checkpoint								
2	Unsatisfactory - Checkpoint is too small, poor condition								
3	Average - Needs updates or renovations to function well								
4	Satisfactory - Good size, good condition								
5	Very Satisfactory - Generous size, excellent condition								
N/A	Does not apply								
14.2	Does the administration area feel welcoming?					5		1.00	5.00
1	Very unsatisfactory - No welcome space								This likely but difficult to tell from drawings.
2	Unsatisfactory - Too small, poor lighting and transparency, limited informal seating, poor condition								
3	Average - Adequate size and layout, needs updates or renovations to feel welcoming								
4	Satisfactory - Good size and layout, good lighting and transparency, informal seating provided								
5	Very Satisfactory - Generous size and layout, plenty of light and transparency, informal seating provided, excellent condition								
N/A	Does not apply								
14.3	For those spaces that require it, does the administration area have adequate acoustic privacy?					5		1.00	5.00
1	Very unsatisfactory - No acoustic separations								
2	Unsatisfactory - Acoustic separations do not perform well								
3	Average - Some acoustic separations function okay, but portions need updates or renovations								
4	Satisfactory - Good acoustic separations								
5	Very Satisfactory - Excellent acoustic separations								
N/A	Does not apply								
14.4	Are conference rooms easily accessed for public / parent use?					5		1.00	5.00
1	Very unsatisfactory - Not accessible for public/parent use								Conference rooms are not easily accessible for public/parent use. They are buried within the administrative corridor. However, this is a community room provided that is easily accessible.
2	Unsatisfactory - Limited access, no transparency, poor condition, difficult to find								
3	Average - Adequate accessibility, needs updates or renovations to function well								
4	Satisfactory - Good accessibility, good transparency, good size and condition								
5	Very Satisfactory - Excellent accessibility, excellent transparency, generous size, excellent condition								
N/A	Does not apply								